

Constituent Morpheme Frequency Data for Two-Kanji Compound Words

Terry Joyce and Nobuo Ohta (*Institute of Psychology, University of Tsukuba, Tsukuba 305-8572, Japan*)

The first purpose of this paper is to discuss the theoretical implications of extending the concepts of 'orthographic neighbors' (Coltheart, Davelaar, Jonasson & Besner, 1977) and 'morphological families' (Schreuder & Baayen, 1997) to the Japanese writing system. Given that kanji are most accurately morphographic in nature, we suggest that the notion of 'morphological family' is the more appropriate concept for investigating two-kanji compound words in the Japanese mental lexicon. The second purpose of the paper is to discuss and present cumulative frequency data for the constituent morphemes of two-kanji compound words. This data was compiled by surveying two-kanji compound words for a six-year period (1993-1998) from the newspaper frequency data included in the NTT database (Amano & Kondô, 2000). Finally, we briefly discuss this data in terms of the positional frequency or positional sensitivity of constituents within two-kanji compound words.

Key words: two-kanji compound words, constituent morpheme frequencies, orthographic neighbors, morphological families

Word frequency and word familiarity effects — the findings that high frequency or familiar words are recognized quicker and more accurately than low frequency or unfamiliar words — are among the most robust effects within visual word recognition research (Rubenstein, Garfield & Millikan, 1970; for review, see also Gernsbacher, 1984). In controlling for these effects in experiments using Japanese language materials, researchers have mainly relied on the two major word frequency surveys conducted by the National Language Research Institute (NLRI) for magazines (1962) and newspaper (1976), and more recently on the NTT databases (Amano & Kondô, 1999, 2000).

In addition to word frequency and word familiarity effects, there is also evidence that suggests that the recognition of a target word is influenced by orthographically similar words, referred

to as 'neighbors' (Andrews, 1992; Coltheart, Davelaar, Jonasson & Besner, 1977; Grainger, 1990; Grainger, O'Regan, Jacobs & Segui, 1989; Pollatsek, Perea & Binder, 1999; Sears, Hino & Lupker, 1995) and by morphologically-related or 'family' words (Baayen, Lieber & Schreuder, 1997; Bertram, Baayen & Schreuder, 2000; De Jong, Schreuder & Baayen, 2000; Krott, Baayen & Schreuder, 2001; Schreuder & Baayen, 1997). One purpose of this paper is to discuss the theoretical implications of extending these concepts to the Japanese writing system. Although Kawakami (1997, 2000) has presented data relating to two-kanji compound words in order to control for 'neighborhoods,' given that kanji are most accurately morphographic in nature, the notion of 'morphological family' would appear to be far more appropriate for kanji words. A second purpose of the paper is to discuss and present cumulative frequency data for the constituent morphemes of two-kanji compound words. This data was compiled by surveying two-kanji compound words for a six-year period (1993-1998) from the

newspaper frequency data included in the NTT database (Amano & Kondô, 2000). We hope that this data might be of some use in investigating morphological aspects of two-kanji compound words within the Japanese mental lexicon. Finally, we briefly discuss this data in terms of the positional frequency or positional sensitivity of constituents within two-kanji compound words.

Orthographic Neighborhoods

Much of the research into neighborhood effects has adopted Coltheart et al.'s (1977) straightforward definition of an orthographic neighbor—any word that can be generated by changing just one letter of a given word while preserving letter positions (e.g., *mice* and *race* are both neighbors of *rice*), with the neighborhood being the set of such neighbors. However, while this definition is simple enough, there has been much controversy surrounding neighborhood effects, especially over whether these are inhibitory or facilitatory in nature.

For instance, although Coltheart et al. (1977) only reported an effect for nonwords, where nonwords with large neighborhoods were slower to reject, Andrews (1992) found facilitated lexical decision and standard naming latencies for low-frequency words. The situation is further complicated by the claim by Grainger and his colleagues (Grainger, 1990; Grainger, et al. 1989) that it is not neighborhood size per se but rather neighborhood frequency that is important. In Grainger, et al., having at least one neighbor of higher frequency produced inhibition in both lexical decision latencies and gaze durations, although this might be task-specific, for while Grainger (1990) also found inhibition in lexical decision, having at least one neighbor of higher frequency produced facilitation in naming. Examining the apparent contradiction in the findings from Andrews and Grainger, et al., Sears, et al. (1995) point out that neighborhood size and neighborhood frequency are likely to covary. Their results, which are more consistent with Andrews, was that a large neighborhood facilitated processing for low-frequency words, and the existence of higher frequency neighbors facilitated processing rather than inhibiting it. More recently, Pollatsek, et al. (1999) found that

when the frequency of the highest frequency neighbor was equated, a larger neighborhood facilitated lexical decision judgments, although this had an inhibitory effect on reading sentences containing the target words.

While the results from the research into neighborhood effects have not always been consistent, much of the interest in these effects lies in the fact that they potentially offer a means of differentiating contrasting models of lexical access. For example, Andrews (1992) has argued that although her results are incompatible with lexical-access models that involve serial comparison, activation models assuming either localized or distributed representations are capable of accounting for neighborhood effects.

Morphological Families

As well as the purely visual overlap or similarity of orthographic neighbors, word recognition is also influenced by morphologically related words. For instance, Taft (1979) provided an early demonstration of this in his experiments that manipulated both surface frequency, the frequency for a given form, and base frequency, the summed frequencies of inflected forms. When surface frequency was kept constant, responses were faster for words with higher base frequencies.

More recently, investigating the components of word frequency effects with monomorphemic, or simplex, nouns in Dutch, Schreuder and Baayen (1997) reported an effect of morphological family size. In addition to distinguishing between the surface frequencies for singular and plural forms (i.e., *table*, *tables*), which would give a stem frequency for inflectional forms when combined, they used the term morphological family to refer to the set of words sharing a stem formed either by derivation (i.e., *tablet*, *tabular*) or compounding (i.e., *tablespoon*, *timetable*). There are two counts related to the morphological family—family size is a type count of the number of different words in the set, while cumulative family frequency is the summed token frequencies of those words. However, although Schreuder and Baayen found that response times in lexical decision and subjective ratings of frequency were influenced by morphological family size, there was no effect for

cumulative family frequency. This family size effect has also been observed for English simplex nouns (Baayen, et al., 1997), for inflected and derived Dutch nouns (Bertram, et al., 2000), and for Dutch verbs (De Jong, et al. 2000). Evidence concerning semantic selection restrictions for affixes, semantically transparent family members (Bertram, et al.), verb morphology, and mediation via abstract central morphological representations (De Jong, et al.) suggests the family effect is a semantic-morphological effect. Krott, et al. (2001) introduce the term ‘constituent family’ to refer to a set of compound words that share the same first or second constituent. Although the selection of linking morphemes in novel noun-noun compounds in Dutch is very unpredictable by rules, Krott, et al. argue, based on the results of production experiments and analogy simulations, that this can be predicted reasonably well by analogy based on the constituent families of both the left and right constituents.

Supporting Bertram, et al.’s (2000) claim that much of the interconnectivity in the human mental lexicon is based on networks of morphologically related words, these morphological family effects must also have important implications for models of the mental lexicon.¹⁾

Implications for kanji

Having outlined the concepts of neighborhoods and morphological families, we now turn to consider their relevance for kanji. As already mentioned, Kawakami (1997, 2000) has presented frequency data relating to two-kanji compound words in order to control for ‘neighborhoods.’²⁾ Although we discuss this data below, we first need to examine this extension of the notion of orthographic neighbors to two-kanji compound words.

In applying Coltheart, et al.’s (1977) simple definition of a neighbor — any word generated by changing just one letter of a given word while preserving letter positions — to two-kanji compound words, Kawakami (1997, 2000) is clearly equating ‘one letter’ with ‘one character.’ This analogy is straightforward enough and, arguably, preserves a sense of the orthographic similarity that underlies neighborhoods in the degree of visual overlap or similarity that two-kanji compound word neighbors would possess by virtue of a

shared character. However, the analogy completely overlooks the fact that orthographically letters and characters function at entirely different levels.

Although typologies of writing systems and, in particular, the terminology employed in them have been much debated (Coulmas, 1989, 1996; Daniels, 1996; DeFrancis, 1989; Gelb, 1952; Sampson, 1985; Sproat, 2000), writing systems are usually classified according to the general level at which the graphic units function. The first distinction to make is between cenic and pleremic writing systems (Coulmas 1996; Haas, 1976, 1983). Based on the Greek word for ‘empty,’ cenic refers to writing systems where the graphic units only represent sounds and are, therefore, empty of semantic reference. Also referred to as phonographic, the graphic units in these writing systems represent either phonemes (i.e., alphabetic letters) or syllables (i.e., Japanese kana). In contrast, from the Greek for ‘full,’ pleremic refers to writing systems where the graphic units are semantically-informed denoting both sounds and meanings, which is the case with kanji. Although the term logographic is often used for kanji, this is misleading for it implies that only lexemes are represented. Reflecting the fact that kanji represent both free and bound morphemes, a far more accurate term is morphographic.

This functional difference between alphabetic letters and kanji is likely to have important implications for models of the mental lexicon, particularly when considering the loci of word recognition effects. While Coltheart, et al.’s (1977)

1) These papers reporting morphological family effects have primarily interpreted their results within the parallel dual-route model of morphological processing proposed by Schreuder and Baayen (1997) and Baayen, Dijkstra & Schreuder (1997). Krott, et al. (2001) question whether connectionist models, where the basic regulating mechanism is frequency of occurrence, can account for both the presence of a morphological family size, which is a type-frequency effect, and the absence of a cumulative morphological family effect, which is a token-frequency.

2) Although Kawakami (1997) actually refers to a ‘neighbor’ as 類似語 (p.243), presumably this is to emphasize the orthographic similarity or visual overlap, rather than to suggest other forms of similarity.

definition of neighbors does not explicitly limit itself to cenic writing systems, the confounding of orthographic similarity and semantic relatedness that arises if the notion of orthographic neighbors is extended to a pleremic system like kanji is clearly problematic. Given the morphographic nature of kanji, 'morphological families' is surely a more appropriate concept for investigating two-kanji compound words in the Japanese mental lexicon.

Constituent Morpheme Frequency Survey

Although it is relatively easy to look up word frequency and word familiarity data from existing surveys (Amano & Kondô, 1999, 2000; NLRI, 1962, 1976; but see also Yokoyama, Sasahara, Long & Tanimoto, 2001), more specific kinds of data such as cumulative frequencies must be calculated from raw word frequency data. Compiling this kind of data can, however, be very time-consuming, particularly when the raw data is not in electronic form. The cumulative frequency data for the constituent morphemes of two-kanji compound words presented in this paper was compiled from the newspaper frequency data in the NTT database (Amano & Kondô, 2000) by surveying two-kanji compound words for a six-year period (1993-1998). We present this data in the hope that it might be of some use in investigating morphological aspects of two-kanji compound words within the Japanese mental lexicon.

However, before we describe our data, we need to look briefly at the data provided in Kawakami's (1997, 2000) surveys. While we have argued that morphological families is a more appropriate notion than orthographic neighbors for thinking about two-kanji compound words in the Japanese mental lexicon, this is essentially a theoretical issue and, in this case, has little direct bearing on the actual format of the cumulative frequency data. There are, however, a few minor methodological reasons why we have not attempted to utilize Kawakami's data. In the first survey, Kawakami (1997) provides only cumulative type counts, i.e., the numbers of compound words sharing a kanji as either the first or second element. These counts are based on the word entries in the Kôjien dictionary (4th edition)

consisting of the 2,965 JIS level 1 kanji. So, for example, the kanji 亜 is a constituent of 21 compound words (16 as first element and 5 as second element). One possible problem with using an authoritative dictionary like the Kôjien is that the counts may be inflated by rarely used words, but cumulative frequency data was not reported for the compound words. In the second survey, however, Kawakami (2000) provides only cumulative token counts, i.e., the cumulative frequency of compound words sharing a kanji as either the first or second element. These cumulative frequency counts were calculated for the compound words used in Kawakami (1997) by consulting their frequencies in NLRI (1997), a floppy disk version of the magazine survey. The problem with this method is that the cumulative frequency counts only represent the sub-set of compound words that appear in both these sources. Thus, although the kanji 亜 has a type count of 21 according to Kawakami (1997), because only three of those types also appeared in NLRI (1997) (亜鉛-freq. 5, 東亜-freq. 11, and 白亜-freq. 1), the total cumulative frequency for this kanji is given as 17 (5 as first element and 12 as second element). This example suggests that the Kôjien-based type counts may indeed include rarely used words, but, apart from this single example, the type counts underlying the cumulative token counts (i.e., the numbers of types for the sub-set of compound words for both sources) are not reported.³⁾ Another concern with this cumulative frequency data is the appropriateness of using magazine data for a single year that was originally collected more than 30 years ago,

3) De Jong, et al. (2000) question how realistic it is to include very low-frequency words when counting morphological families, noting that their inclusion implies an assumption that these are actually stored in the mental lexicon. This question highlights some of the difficult issues and compromises involved in attempting to quantify the mental lexicon. In basing our survey on newspaper data, rather than an authoritative dictionary, we have from the start sought to focus on usage, but readily acknowledge the problems associated with newspaper frequencies (Gernsbacher, 1984) and accept that our data is at best only providing rough estimates of constituent frequencies for two-kanji compound words.

Table 1 Annual Type and Token Counts, Together with Total Type and Token Counts for the Six-year Period (1993–1998)

Year	Types		Tokens	
	All compound words	Excluding proper nouns	All compound words	Excluding proper nouns
1993	42,474	24,457	3,984,370	3,472,674
1994	42,928	24,763	4,034,259	3,510,526
1995	43,641	25,116	4,176,237	3,628,669
1996	44,008	25,600	4,283,915	3,739,755
1997	43,985	25,595	4,177,732	3,653,244
1998	43,442	25,348	4,218,128	3,707,865
	69,528	35,647	24,874,641	21,712,733

when seeking to control for lexical effects in word recognition experiments being conducted now.

In view of these minor problems with Kawakami's (1997, 2000) surveys, we have surveyed a six-year period (1993–1998) of the newspaper frequency data included in the NTT database (Amano & Kondô, 2000) in order to extract both cumulative type and token counts for the constituent morphemes of two-kanji compound words.

Method

All two-kanji compound words were extracted from the NTT newspaper frequency data (Amano & Kondô, 2000) for the six years 1993–1998. Although the NTT database includes newspaper data for 14 years (1985–1998), the large increases in article coverage both in 1987 and 1993 make it impossible to reliably average the type and token counts across all 14 years. Following the inclusion of the Sunday editions and sport page articles in 1993, the average coverage for the six-year period 1993–1998 was 76,556 articles (S.D. 1,476), representing an average increase of 12,069 articles compared to the previous five-year period (Amano & Kondô, 2000, p.xxv).

After eliminating a number of two-kanji compound words composed of kanji outside the 2,965 JIS level 1 set, the items were grouped according to their constituent kanji. Cumulative type and token frequencies were calculated for these constituent family groups, with separate counts for all compound words and for compound words excluding proper nouns based on the NTT database's classification of word class.

Results and discussion

Table 1 shows the annual type and token counts, together with the total type and token counts for the six-year period, for all compounds and compound words excluding proper nouns.⁴⁾

The cumulative type and token frequency data is listed in the appendix for the constituent morphemes of two-kanji compound words excluding proper nouns.⁵⁾ This data includes the total type count for the six-year period, the average annual type count and the average annual token count as a function of constituent position. The treatment of proper nouns is a difficult issue, particularly in the case of kanji. As shown in Table 1, while proper nouns account for 49% of all the two-kanji compound word types, they only represent 13% of the tokens. This is because, apart from a relatively small number of frequent proper nouns such as 東京 (average token count, 16,294) and 加藤 (average token count, 1,896), most proper nouns have very low token counts. Proper nouns also have special distribution characteristics in terms of component kanji.

4) The type counts for all compounds have not been adjusted for cases where an item is counted separately as both a proper noun and an ordinary noun in the NTT database.

5) The data has not been corrected for the presence of 熟字訓, monomorphemic words, represented orthographically with two-kanji, such as 葡萄, where the constituent kanji cannot be analyzed as separate morphemes. These are retained not because we wish to suggest that a morphemic analysis is possible, but simply because we know of no exhaustive list of monomorphemic words that would allow us to confidently eliminate all of these from our counts.

Although many place names and personal names consist of basic kanji, such as 山, 川, and 木, that are also constituents of many other words, there are many proper nouns that consist of kanji which are rarely, if at all, used in other words. For instance, 藤 is a component of 232 types (average token count, 10,506), of which all but 10 (average token count, 127) are proper nouns. Because of these considerations and the fact that proper nouns are not normally used in word recognition research, the constituent morpheme frequency data reported here is based on counts excluding proper nouns.

General Discussion

Kanji are most accurately morphographic in nature. Given this fact, we have argued that the notion of morphological families is more appropriate than orthographic neighbors for investigating two-kanji compound words in the Japanese mental lexicon. We have also discussed and presented cumulative frequency data for the constituent morphemes of two-kanji compound words. Although this data approaches Krott, et al.'s (2001) definition of a constituent family, it must be remembered that our data is based only on two-kanji compound words. A complete constituent family would also include the frequencies of a morpheme as a word stem (i.e., in verbs, such as 化 in 化ける) and as constituents of longer compound words (i.e., 化 in 近代化). However, as two-kanji compound words are the most common word structure in the Japanese language (Nomura, 1988), accounting for 70 percent of Japanese words (Yokosawa & Umeda, 1988), the morphological issues relating to their representation are of central importance in understanding the Japanese mental lexicon.

The research on morphological families (Baayen, et al., 1997; Bertram, et al., 2000; Schreuder & Baayen, 1997) discussed earlier was all conducted for languages using alphabetic writing systems. These studies reported an effect of morphological family size, although no effects were observed for cumulative family frequency. The cumulative type and token frequencies for the constituents of two-kanji compound words presented in this paper

could be used to investigate whether such findings would be replicated in word recognition experiments with kanji.

The presented cumulative frequency data may also be useful in investigating the issue of positional frequency or positional sensitivity for the constituents of two-kanji compound words. Discussing Chinese character and word recognition in terms of a multilevel interactive-activation framework, Taft, Zhu & Peng (1999) argue that while the representations of radicals (including both semantic radicals and phonetic marker components) are positionally specific, positional information is not so important for character-level representations. On the assumption that responses to characters consisting of transposable radicals (i.e., the radicals 口 and 木 in 呆 and 杏) would be slower due to activation of both characters if radical representations are position-free, Taft, et al. regarded the lack of interference in both character decision and naming as evidence that positional information is part of the radical representation. Extending the same logic to two-character compound words consisting of transposable characters (such as 社会 and 会社 in Japanese), Taft, et al. interpreted interference in lexical decision as indicating that characters have position-free representations. However, while it may be the case that many characters have position-free representations, it is not clear whether this is true for all characters. As Joyce (in press) observes, because two-kanji compound words are formed according to a number of word formation principles, such as modifier+modified, verb+complement and synonymous pairs, the positional frequencies of constituent kanji are likely to be closely linked to word class. For example, consistent with modifiers proceeding modified elements, 赤 'red' is the first constituent of 65 types but only the second constituent of 3 types, which have cumulative token counts of 2,531 and 63 respectively. Positional frequency information of this kind may be assumed in the lemma-unit model that Joyce advocates adopting for the Japanese mental lexicon, although the locus of this kind of cumulative frequency information is open to debate (see Baayen, et al. 1997; De Jong, et al., 2000). Frequency effects may be an attribute of access

representations or of lemma units, which function to differentiate and address concepts and are seen as representing information about word class and element order.

In a survey of radical frequencies based on the 2,965 JIS level 1 kanji, Saito, Kawakami, and Masuda (1995) report that for left-right (hen+tsukuri) structured complex kanji, 82% of the 857 radical components are positionally fixed (11% on the left and 71% on the right only), with the remaining 18% being free-floating appearing in both the left and right positions. From the cumulative type and token counts presented in this paper, it is possible to calculate ratios of

positional frequency or positional sensitivity for the constituent kanji of two-kanji compound words. Taking the cumulative type counts, for instance, to calculate how often a kanji appears as the first constituent of two-kanji compound words, 以 would have a positional ratio of 100% (appearing as first kanji in 17 types, but never as second constituent), whereas 務 would have a positional ratio of 0% (never as first constituent, but appearing as second constituent in 63 types). Fig. 1 shows the distributions of positional frequency ratios based on (a) cumulative type counts and (b) cumulative token counts for 2,743 kanji.⁶⁾ In contrast to the strong trend observed by Saito et

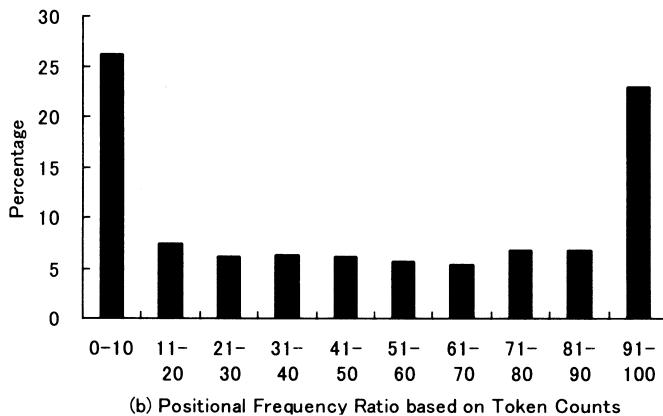
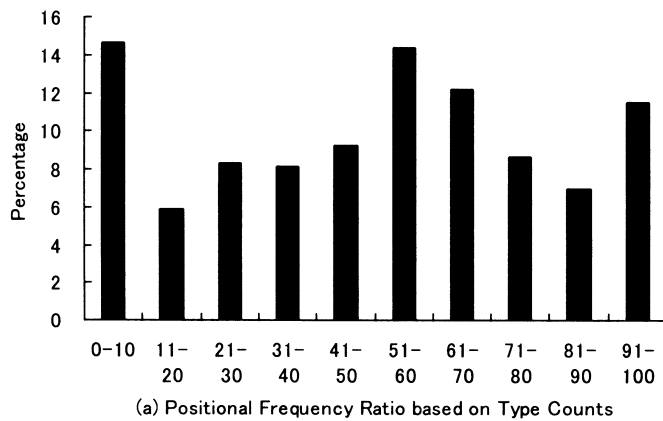


Fig. 1 Distribution of positional frequency ratios for 2,743 kanji based on (a) cumulative type counts and (b) cumulative token counts.

al. for most radicals (82%) to be positionally-fixed within kanji, only 610 kanji (22%) have absolute ratio values, indicating that these kanji always appear in the same position within two-kanji compound words (342 kanji (12%) have a 100% ratio and 268 kanji (10%) have a 0% ratio). However, as the figures show the distributions for positional frequency ratios are not normal, particularly in the case of ratios based on token counts. While it seems reasonable to assume that characters with mid-range positional ratios have position-free representations, the question of whether characters with more extreme positional ratio scores also have position-free representations would seem to warrant further investigation.

We hope that the cumulative frequency data for the constituent morphemes of two-kanji compound words presented in this paper will be of use in investigating a number of important morphological issues surrounding the representation of two-kanji compound words within the Japanese mental lexicon.

References

- Amano, S. & Kondô, T. (Eds.). (1999). *Nihongo no goitokusei* [Lexical properties of Japanese] Vols. 1-6, NTT database series. Tokyo: Sanseidô.
- Amano, S. & Kondô, T. (Eds.). (2000). *Nihongo no goitokusei* [Lexical properties of Japanese] Vol. 7 (Frequency), NTT database series. Tokyo: Sanseidô.
- Andrews, S. (1992) Frequency and neighborhood effects on lexical access: Lexical similarity or orthographic redundancy? *Journal of Experimental Psychology: Learning, Memory, and Cognition*, **18**, 234-254.
- Baayen, R.H., Dijkstra, T. & Schreuder, R. (1997). Singulars and plurals in Dutch: Evidence for a parallel dual route model. *Journal of Memory and Language*, **37**, 94-117.
- Baayen, R.H., Lieber, R. & Schreuder, R. (1997). The morphological complexity of simplex nouns. *Linguistics*, **35**, 861-877.
- Bertram, R., Baayen, R.H. & Schreuder, R. (2000). Effects of family size for complex words. *Journal of Memory and Language*, **42**, 390-405.
- Coltheart, M., Davelaar, E., Jonasson, J.T. & Besner, D. (1977). Access to the internal lexicon. In S. Dornic (Ed.). *Attention and performance VI* (pp. 535-555). Hillsdale, NJ: Lawrence Erlbaum Associates.
- Coulmas, F. (1989). *The writing systems of the world*. Oxford, England: Basil Blackwell.
- Coulmas, F. (1996). *The Blackwell encyclopedia of writing systems*. Oxford, England: Blackwell.
- Daniels, P.T. (1996). The study of writing systems. In P.T. Daniels & W. Bright (Eds.). *The world's writing systems* (pp. 3-17). New York, NY: Oxford University Press.
- De Jong, N.H., Schreuder, R. & Baayen, R.H. (2000). The morphological family size effect and morphology. *Language and Cognitive Processes*, **15**, 329-365.
- DeFrancis, J. (1989). *Visible speech: The diverse oneness of writing systems*. Honolulu, HI: University of Hawaii Press.
- Gelb, I.J. (1952). *A study of writing: The foundations of grammatology*. Chicago: University of Chicago Press.
- Gernsbacher, M.A., (1984). Resolving 20 years of inconsistent interactions between lexical familiarity and orthography, concreteness, and polysemy. *Journal of Experimental Psychology*, **113**, 256-281.
- Grainger, J. (1990). Word frequency and neighborhood frequency effects in lexical decision and naming. *Journal of Memory and Language*, **29**, 228-244.
- Grainger, J., O'Regan, J.K., Jacobs, A.M. & Segui, J. (1989). On the role of competing word units in visual word recognition: The neighborhood frequency effect. *Perception and Psychophysics*, **45**, 189-195.
- Haas, W. (1976). Writing: The basic options. In W. Haas (Ed.), *Writing without letters* (pp. 131-208). Manchester, England: Manchester University Press.
- Haas, W. (1983). Determining the level of a script. In F. Coulmas & K. Ehlich (Eds.), *Writing in focus* (pp. 15-29) Berlin, Germany: Mouton.
- Joyce, T. (in press). Constituent-morpheme priming: Implications from the morphology of two-kanji compound words. *Japanese Psychological Research*.

6) Of the 2,965 JIS level 1 kanji, 222 do not appear as constituents of two-kanji compound words in six-year newspaper corpus used in this study

- Kawakami, M. (1997). JIS isshu kanji 2965 ji o mochiite sakusei sareru kanji niiji jukugo sūhyō: Macintosh ban iwanami kōjien daiyonban ni motozuku ruijigosū chōsa [Numerical data for two-kanji compound words formed from 2965 JIS level 1 kanji characters: Survey of synonyms based on Iwanami's Kojien dictionary (4th edition CD for Macintosh)]. *Bulletin of the School of Education, Nagoya University*, 44, 243–299.
- Kawakami, M. (2000). JIS isshu kanji 2965 ji wo mochiita kanji niiji jukugo no ruiseki ruijigo hindo hyō [A table of cumulative frequencies of Japanese neighbor-kanji-compound words] *Dokkai Kagaku*, 44, 150–159.
- Krott, A., Baayen, R.H. & Schreuder, R. (2001). Analogy in morphology: Modeling the choice of linking morphemes in Dutch. *Linguistics*, 39, 51–93.
- National Language Research Institute, (1962) *Gendai zasshi kyūjū shu no yōgo yōji* [Vocabulary and characters in 90 current magazines] (Research reports 21, 22, and 25). Tokyo: Shuei Shuppan.
- National Language Research Institute, (1976) *Gendai shinbun no kanji* [Kanji in current newspapers] (Research report 56). Tokyo: Shuei Shuppan.
- National Language Research Institute, (1997) *Gendai zasshi kyūjū shu no yōgo yōji* [Vocabulary and characters in 90 current magazines] Floppy disk version (National Language Research Institute Language Processing Data Vol. 7). Tokyo: Sanseidō.
- Nomura, M. (1988). Niiji kango no kōzō [The structure of 2 kanji Sino-Japanese words]. *Nihongogaku*, 7(5), 44–55.
- Pollatsek, A., Perea, M. & Binder, K.S. (1999). The effects of “neighborhood size” in reading and lexical decision. *Journal of Experimental Psychology: Human Perception and Performance*, 25, 1142–1158.
- Rubenstein, H., Garfield, L. & Millikan, J.A. (1970) Homographic entries in the internal lexicon. *Journal of Verbal Learning and Verbal Behavior*, 9, 487–494.
- Saito, H., Kawakami, M., Masuda, H. (1995). Kanji kōsei ni okeru buhin (bushu) no shitsugen hindo [Frequency of semantic and phonetic components of radical types in complex left-right kanji]. *Jōhō Bunka Kenkyū* (Bulletin of the School of Informatics and Science, Nagoya University, Japan), 1, 113–134.
- Sampson, G. (1985). *Writing systems: A linguistic introduction*. Stanford, CA: Stanford University Press.
- Schreuder, R. & Baayen, R.H. (1995). Modeling morphological processing. In Laurie Beth Feldman, (Ed.), *Morphological aspects of language processing* (pp. 131–154). Hillsdale, NJ: Lawrence Erlbaum Associates.
- Schreuder, R. & Baayen, R.H. (1997). How complex simplex words can be. *Journal of Memory and Language*, 37, 118–139.
- Sears, C.R., Hino, Y. & Lupker, S.J. (1995). Neighborhood size and neighborhood frequency effects in word recognition. *Journal of Experimental Psychology: Human Perception and Performance*, 21, 876–900.
- Sproat, R. (2000). *A computational theory of writing systems*. Stanford, CA: Cambridge University Press.
- Taft, M. (1979). Recognition of affixed words and the word frequency effect. *Memory & Cognition*, 7, 263–272.
- Taft, M., Zhu, X. & Peng, D., (1999). Positional specificity of radicals in Chinese character recognition. *Journal of Memory and Language*, 40, 498–519.
- Yokosawa, K. & Umeda, M. (1988). Processes in human kanji-word recognition. *Proceedings of the 1988 IEEE international conference on systems, man, and cybernetics* (pp. 377–380). August 8–12, 1988, Beijing and Shenyang, China.
- Yokoyama, S., Sasahara, H., Long, E. & Tanimoto, S. (2001). Shinbun kanji chōsa no genzai to shōrai [The present and future of newspaper kanji surveys] *Nihongo Kagaku*, 9, 33–42.

Appendix

Constituent Morpheme Frequency Data: Total Type, Average Type (in parentheses) and Average Token Counts, as a Function of Constituent Position (First Kanji (K1) and Second Kanji (K2))

(Note: Average annual type counts below 10 and average token counts below 100 are reported to one decimal place)

Types		Tokens	Types		Tokens	Types		Tokens
K1·K2		K1·K2	K1·K2		K1·K2	K1·K2		K1·K2
垂	10(5.5)·3(3.0)	63.5·55.2	伊	3(2.2)·2(0.3)	150·0.5	印	19(11)·37(25)	1547·1299
唾	1(1.0)·2(1.0)	9.2·2	位	8(5.2)·50(40)	881·4968	咽	2(2.0)·0(0)	11.8·0
娃	0(0)·0(0)	0·0	依	8(6.8)·1(1.0)	2107·25.2	員	2(1.5)·60(52)	84.2·23285
阿	7(3.8)·0(0)	12.3·0	偉	8(4.5)·1(0.3)	62.3·1.2	因	6(4.5)·20(16)	195·4199
哀	18(13)·1(1.0)	138·46.3	圉	1(1.0)·8(4.8)	219·1439	姻	2(1.3)·1(1.0)	3.0·68.5
愛	45(35)·17(14)	1027·434	夷	1(0.2)·5(2.0)	0.2·5.3	引	30(18)·34(19)	1156·3479
挨	1(1.0)·0(0)	25.8·0	委	8(7.3)·5(4.8)	2670·473	飲	8(5.3)·12(7.0)	439·32.2
始	0(0)·0(0)	0·0	威	15(12)·10(6.5)	515·953	淫	5(2.2)·4(0.8)	12.2·1.2
逢	3(1.7)·0(0)	2.5·0	尉	1(0.8)·9(6.2)	2.2·73.2	胤	0(0)·1(0.2)	0·0.2
葵	1(0.8)·2(0.8)	1.0·0.8	惟	1(0.2)·0(0)	0.2·0	蔭	3(0.7)·3(0.8)	0.8·2.3
茜	3(0.7)·0(0)	0.8·0	意	18(16)·66(49)	17343·10675	院	12(8.7)·40(32)	518·13326
種	0(0)·0(0)	0·0	慰	8(6.7)·2(1.2)	283·3.0	陰	26(16)·22(13)	183·111
惡	75(52)·24(18)	2448·479	易	5(2.5)·9(7.7)	5.7·2782	隱	18(12)·6(2.5)	234·5.7
握	3(2.2)·2(1.2)	203·515	椅	1(1.0)·0(0)	29.2·0	韻	4(2.2)·10(5.0)	7.3·47.5
渥	0(0)·0(0)	0·0	為	5(2.8)·8(6.3)	371·1699	吋	0(0)·0(0)	0·0
旭	2(1.3)·0(0)	15.3·0	畏	3(2.5)·0(0)	28.8·0	右	32(26)·5(5.0)	1696·475
葦	4(1.2)·1(0.2)	3.2·0.2	異	54(40)·11(7.5)	2047·159	宇	3(2.2)·5(2.2)	680·6.3
芦	0(0)·0(0)	0·0	移	20(16)·2(1.2)	5242·73.8	烏	4(2.3)·3(1.5)	5.2·10.2
鱒	0(0)·0(0)	0·0	維	2(2.0)·0(0)	2599·0	羽	16(10)·15(4.7)	132·9.2
梓	0(0)·0(0)	0·0	緯	3(1.7)·3(3.0)	27.8·692	迂	3(2.2)·0(0)	11.2·0
庄	17(14)·35(26)	2122·947	胃	12(9.5)·1(0.5)	73.3·1.5	雨	37(24)·37(22)	313·521
幹	1(1.0)·0(0)	32.5·0	萎	1(0.5)·0(0)	0.8·0	卯	4(1.7)·1(0.2)	4.2·0.2
扱	0(0)·0(0)	0·0	衣	15(10)·34(18)	562·157	鶉	4(2.8)·1(0.2)	7.2·0.2
宛	3(1.5)·0(0)	2.7·0	謂	0(0)·0(0)	0·0	窺	0(0)·0(0)	0·0
姐	1(0.3)·0(0)	0.5·0	違	7(5.2)·7(4.0)	3048·141	丑	1(0.2)·2(0.5)	0.3·0.8
虻	0(0)·0(0)	0·0	遺	46(35)·2(1.8)	4003·8.0	確	0(0)·0(0)	0·0
飴	2(1)·0(0)	2.0·0	医	26(20)·12(6.8)	6606·62.7	白	2(1.2)·3(1.2)	1.8·2.8
絢	0(0)·0(0)	0·0	井	9(5.2)·9(6.3)	109·292	渦	6(4.0)·1(0.3)	59.2·0.7
綾	5(1.7)·1(0.2)	71.2·0.2	亥	0(0)·3(0.7)	0·0.8	嘘	0(0)·0(0)	0·0
鮎	1(0.2)·0(0)	0.5·0	域	2(2.0)·16(14)	335·8212	唄	0(0)·10(5.7)	0·78.0
或	0(0)·0(0)	0·0	育	6(6.0)·15(11)	1165·3991	辭	2(0.3)·2(0.3)	0.3·0.3
粟	2(0.3)·0(0)	0.5·0	郁	1(1.0)·0(0)	26.5·0	蔚	0(0)·0(0)	0·0
袷	0(0)·0(0)	0·0	磯	7(2.5)·1(0.5)	3.5·1.2	鰻	0(0)·1(0.7)	0·3.5
安	40(33)·18(14)	7675·4414	一	413(357)·40(34)	64311·9879	姥	1(0.5)·1(1.0)	0.5·7.7
庵	2(0.8)·3(1.5)	1.7·4.2	壺	0(0)·0(0)	0·0	厩	2(1.0)·0(0)	2.5·0
按	4(1.2)·0(0)	2.2·0	溢	3(0.7)·2(1.5)	0.7·3.2	浦	8(3.2)·3(1.3)	158·2.5
暗	33(26)·4(1.5)	793·95.8	逸	12(6.7)·6(5.2)	188·55.7	瓜	3(0.7)·10(4.2)	1.0·11.0
案	7(6.7)·36(30)	736·7973	稻	20(12)·4(2.3)	239·22.2	閏	3(1.0)·0(0)	2.7·0
閏	8(4.0)·6(3.3)	10.0·21.2	茨	0(0)·2(0.5)	0·0.7	嚙	1(0.7)·0(0)	1.0·0
鞍	4(1.7)·0(0)	3.5·0	芋	5(1.5)·7(3.3)	2.2·13.0	云	0(0)·0(0)	0·0
杏	3(2.3)·1(1.0)	12.8·6.3	鱒	1(0.8)·0(0)	1.7·0	運	20(16)·34(21)	9123·538
以	17(17)·0(0)	25907·0	允	1(0.5)·0(0)	0.5·0	雲	30(14)·49(27)	55.0·148

Types		Tokens	Types		Tokens	Types		Tokens
K1	K2	K1	K1	K2	K1	K2	K1	K2
往	0(0)•0(0)	0•0	緣	18(13)•35(24)	145•314	何	23(19)•6(3.3)	2252•11.5
餌	3(1.2)•3(2.0)	2.8•5.5	艷	13(5.0)•6(2.5)	8.2•8.0	伽	2(2.0)•3(0.7)	18.0•0.8
叡	3(1.7)•0(0)	6.5•0	苑	2(1.2)•11(5.3)	1.3•43.7	伽	4(4.0)•45(35)	5172•7328
營	16(10)•35(30)	2231•8520	菌	0(0)•0(0)	0•0	佳	11(5.5)•0(0)	65.7•0
嬰	1(0.5)•1(0.8)	0.5•1.0	遠	39(28)•14(9.7)	682•278	加	34(25)•7(6.2)	4712•10810
影	7(4.3)•37(25)	5266•1538	鉛	9(4.2)•5(3.0)	120•71.8	可	16(10)•5(4.0)	1868•1406
映	4(4.0)•13(7.2)	4789•2286	鴛	0(0)•0(0)	0•0	嘉	5(2.2)•0(0)	19.7•0
曳	4(1.8)•4(1.0)	5.7•1.3	塩	28(20)•14(9.7)	312•57.0	夏	32(21)•22(17)	331•912
榮	15(9.7)•9(6.5)	470•405	於	0(0)•0(0)	0•0	嫁	4(0.8)•6(3.8)	1.3•167
永	16(12)•13(5.0)	385•11.3	汚	12(9.8)•1(0.2)	1279•0.2	家	75(49)•93(64)	8429•7407
泳	3(2.0)•12(7.0)	12.8•419	甥	0(0)•0(0)	0•0	寡	7(5.3)•2(1.3)	59.0•7.0
洩	0(0)•1(1.0)	0•7.5	凹	5(2.5)•1(1.0)	30.5•7.2	科	8(5.3)•36(27)	1072•1295
璞	0(0)•0(0)	0•0	央	0(0)•4(3.5)	0•1395	暇	2(0.8)•4(3.2)	0.8•386
盈	0(0)•0(0)	0•0	奧	18(11)•9(6.5)	105•53.3	果	16(10)•17(13)	354•10186
穎	0(0)•0(0)	0•0	往	12(10)•3(2.2)	673•7.0	架	7(4.7)•9(5.2)	161•78.0
穎	0(0)•0(0)	0•0	忒	25(20)•20(15)	2377•7011	歌	41(27)•69(44)	1415•756
英	37(28)•15(13)	1850•181	押	10(4.5)•7(3.0)	412•5.5	河	24(14)•12(8.7)	478•264
衛	6(4.5)•16(11)	1121•1954	旺	1(1.0)•0(0)	16.2•0	火	58(35)•62(43)	1318•1666
詠	7(2.8)•8(3.8)	6.2•11.5	橫	57(37)•4(4.0)	1590•88.8	珂	0(0)•0(0)	0•0
銳	7(5.7)•5(4.3)	25.0•97.2	欧	5(4.0)•12(11)	12.8•289	禍	4(2.2)•8(6.2)	26.7•56.7
液	11(7.0)•20(14)	356•631	毆	2(1.2)•0(0)	30.2•0	禾	0(0)•0(0)	0•0
疫	4(2.7)•4(3.8)	62.3•355	王	36(29)•30(21)	1469•995	稼	3(2.3)•2(0.8)	263•1.5
益	7(3.2)•24(20)	30.2•4727	翁	1(0.3)•2(1.0)	0.3•2.0	箇	5(1.3)•1(0.2)	2.3•0.2
馱	17(12)•9(6.3)	596•138	襖	1(0.5)•0(0)	0.5•0	花	93(53)•66(38)	831•464
悅	1(0.8)•4(2.5)	3.8•11.7	鶯	1(0.2)•0(0)	0.2•0	苛	6(4.0)•0(0)	18.2•0
謁	1(1.0)•1(1.0)	5.5•6.5	鷗	0(0)•1(1.0)	0•5.8	茄	1(0.8)•0(0)	6.2•0
越	5(4.8)•24(13)	185•147	黃	40(21)•7(5.0)	280•52.7	荷	12(8.7)•15(10)	369•972
閱	4(3.0)•6(3.5)	193•116	岡	1(0.7)•3(3.0)	1.2•75.3	華	19(12)•35(19)	167•210
榎	0(0)•0(0)	0•0	沖	4(2.2)•0(0)	139•0	菓	1(1.0)•6(4.5)	194•23.3
厭	5(2.5)•0(0)	7.3•0	荻	0(0)•0(0)	0•0	蝦	1(0.8)•0(0)	3.2•0
円	48(29)•11(7.5)	3128•168	億	3(1.5)•12(12)	2.3•2904	課	13(9.7)•11(9.2)	5184•224
園	12(9.5)•36(30)	355•1834	屋	9(8.5)•109(70)	798•2584	嘩	0(0)•1(1.0)	0•7.5
堰	1(1.0)•1(0.2)	1.7•0.2	憶	3(2.5)•2(2.0)	113•958	貨	5(3.3)•21(15)	298•2108
奄	0(0)•0(0)	0•0	臆	4(2.5)•1(0.2)	6.7•0.2	迦	0(0)•2(1.5)	0•17.5
宴	3(2.2)•11(7.3)	127•89.2	桶	1(0.7)•7(2.5)	0.8•4.8	過	39(31)•12(8.7)	6051•1471
延	21(14)•15(11)	2154•142	牡	5(3.3)•0(0)	29.8•0	霞	1(0.2)•6(3.2)	0.2•15.0
怨	4(3.3)•3(1.3)	24.3•2.2	乙	7(3.8)•1(1.0)	21.5•6.5	蚊	2(1.3)•0(0)	18.3•0
掩	2(0.3)•0(0)	0.3•0	俺	2(0.8)•0(0)	0.8•0	俄	2(1.0)•0(0)	1.5•0
援	4(4.0)•10(8.5)	2669•6855	卸	3(3.0)•0(0)	236•0	峨	1(0.3)•1(0.3)	0.3•0.3
沿	5(5.0)•1(0.2)	554•0.2	恩	19(14)•14(4.8)	451•9.2	我	13(8.3)•10(6.0)	291•57.3
演	21(18)•30(27)	5584•6221	温	25(17)•22(15)	1354•970	牙	1(1.0)•4(2.8)	16.8•23.3
炎	8(5.8)•17(13)	205•488	穩	4(3.2)•4(4.0)	116•41.2	画	64(42)•51(38)	2150•14055
焰	0(0)•1(1.0)	0•2.3	音	45(33)•88(56)	2754•1634	臥	2(0.7)•9(2.3)	1.3•4.3
煙	11(6.7)•31(22)	87.0•688	下	119(84)•94(72)	4646•7224	芽	3(0.7)•14(8.8)	1.2•99.8
燕	3(0.7)•2(1.7)	2.0•7.0	化	19(13)•80(61)	1047•11505	蛾	1(0.2)•0(0)	0.2•0
猿	6(3.0)•5(3.2)	14.3•11.0	仮	32(20)•0(0)	1177•0	賀	6(3.7)•7(5.0)	25.7•112

Types		Tokens	Types		Tokens	Types		Tokens
K1·K2		K1·K2	K1·K2		K1·K2	K1·K2		K1·K2
雅	13(7.8)·11(6.0)	61.3·23.7	涸	0(0)·0(0)	0·0	葛	9(4.3)·1(0.2)	83.7·0.2
餓	3(2.0)·1(1.0)	31.2·128	馨	0(0)·0(0)	0·0	褐	3(1.7)·0(0)	22.5·0
駕	1(1.0)·3(1.3)	6.3·5.8	蛙	0(0)·4(1.7)	0·3.7	轄	0(0)·4(4.0)	0·292
介	7(6.0)·11(8.0)	2774·2835	垣	6(3.5)·17(8.5)	136·85.8	且	0(0)·0(0)	0·0
会	43(34)·80(69)	37265·33072	柿	3(1.0)·6(3.2)	2.3·11.2	鯉	1(0.7)·1(0.7)	4.0·1.0
解	33(28)·32(23)	11984·6058	蛎	0(0)·1(1.0)	0·4.7	叶	0(0)·0(0)	0·0
回	43(34)·31(27)	8491·14331	鈎	0(0)·0(0)	0·0	桃	0(0)·0(0)	0·0
塊	4(1.3)·16(9.2)	2.3·84.7	劃	0(0)·0(0)	0·0	樺	0(0)·1(1.0)	0·4.2
壞	4(2.3)·8(8.0)	125·3074	嚇	0(0)·1(1.0)	0·104	鞞	0(0)·0(0)	0·0
廻	5(1.3)·5(1.7)	2.2·11.5	各	39(34)·0(0)	6969·0	株	9(6.8)·12(8.2)	3355·140
快	32(25)·11(9.7)	684·247	廓	0(0)·1(0.8)	0·1.5	兜	2(1.2)·1(0.3)	18.3·0.5
怪	18(13)·3(2.2)	198·43.0	拡	7(7.0)·1(1.0)	4702·28.3	竈	0(0)·0(0)	0·0
悔	2(2.0)·1(1.0)	22.0·107	攪	1(0.8)·0(0)	5.8·0	蒲	4(1.5)·2(1.2)	2.7·3.8
恢	2(1.0)·1(0.2)	2.2·0.2	格	22(18)·30(24)	1264·8572	釜	1(0.2)·10(4.2)	0.2·7.7
懷	14(11)·7(5.2)	67.5·47.5	核	7(3.7)·14(6.8)	130·795	鎌	4(2.2)·2(0.3)	5.3·0.3
戒	10(5.5)·12(9.5)	124·1306	殼	0(0)·10(4.2)	0·56.7	嚙	0(0)·0(0)	0·0
拐	1(0.3)·1(1.0)	0.3·295	獲	2(2.0)·5(4.0)	1634·301	鴨	1(1.0)·6(2.8)	4.5·6.3
改	37(33)·2(1.2)	15238·61.7	確	17(15)·4(4.0)	8360·386	栢	0(0)·0(0)	0·0
魁	2(1.2)·3(2.0)	4.0·5.3	穫	0(0)·1(1.0)	0·371	茅	8(3.8)·1(0.7)	8.0·0.7
晦	3(1.0)·0(0)	1.3·0	覺	6(3.8)·21(17)	718·2374	萱	4(2.3)·1(0.2)	9.3·0.3
械	0(0)·2(2.0)	0·661	角	26(15)·39(28)	325·978	粥	0(0)·1(0.2)	0·0.2
海	113(76)·39(29)	6755·1184	赫	0(0)·0(0)	0·0	刈	3(1.2)·2(0.7)	1.5·1.7
灰	8(3.7)·8(4.7)	135·43.8	較	2(0.8)·1(1.0)	2.0·706	苻	0(0)·0(0)	0·0
界	3(1.8)·48(32)	7.2·13208	郭	2(1.0)·7(5.3)	2.5·84.3	瓦	7(3.3)·9(3.5)	16.8·10.8
皆	10(6.0)·2(1.0)	149·1.8	閣	7(6.3)·10(8.2)	3389·3069	乾	23(12)·3(0.5)	274·0.5
繪	23(15)·33(18)	853·202	隔	12(9.7)·7(5.0)	199·182	侃	0(0)·0(0)	0·0
芥	1(0.5)·1(0.7)	1.2·3.5	革	7(5.0)·16(11)	759·9099	冠	8(3.7)·21(13)	35.5·187
蟹	1(0.2)·1(0.3)	0.2·0.3	学	76(59)·118(87)	12637·11948	寒	42(23)·17(12)	179·69.2
開	69(58)·21(15)	16532·7607	岳	4(1.8)·3(1.8)	4.2·120	刊	2(1.8)·25(23)	417·1439
階	10(7.2)·11(9.3)	552·3071	楽	40(29)·60(43)	905·2710	勘	7(5.3)·3(0.5)	296·0.7
貝	7(3.8)·8(4.0)	46.7·9.8	額	3(3.0)·30(28)	173·5131	勸	7(5.8)·0(0)	1080·0
凱	2(2.0)·0(0)	24.8·0	顎	0(0)·2(0.8)	0·2.3	卷	15(9.0)·32(21)	88.0·263
効	0(0)·1(1.0)	0·113	掛	9(3.0)·10(3.2)	6.3·5.5	喚	3(3.0)·2(1.5)	392·28.3
外	132(95)·87(70)	10520·10715	笠	5(2.5)·9(4.7)	9.5·19.3	堪	2(2.0)·0(0)	40.8·0
咳	0(0)·1(0.3)	0·0.5	檜	0(0)·1(0.2)	0·0.2	姦	5(1.5)·4(1.7)	3.7·58.2
害	6(4.7)·42(37)	59.7·8929	櫃	0(0)·0(0)	0·0	完	25(23)·2(2.0)	3600·176
崖	2(0.7)·2(1.3)	0.7·8.5	梶	1(0.2)·0(0)	0.2·0	官	51(35)·44(31)	4010·6426
慨	1(1.0)·2(2.0)	7.0·196	鯀	0(0)·0(0)	0·0	寬	18(8.8)·0(0)	73.3·0
概	12(11)·6(4.8)	519·62.0	渴	1(0.3)·1(1.0)	0.3·186	干	18(11)·13(5.0)	469·161
涯	0(0)·6(3.7)	0·397	割	19(15)·22(12)	1660·4113	幹	4(3.3)·11(6.7)	6955·374
碍	1(0.7)·1(0.3)	4.2·1.5	喝	2(2.0)·2(2.0)	16.0·128	患	3(2.2)·10(6.0)	3761·172
蓋	5(1.8)·8(3.7)	4.3·8.3	恰	3(1.2)·0(0)	6.3·0	感	37(31)·39(32)	5663·2014
街	12(8.2)·3(2.7)	406·32.0	括	2(1.0)·5(4.8)	1.3·1003	慣	6(5.2)·3(1.5)	519·327
該	1(1.0)·1(1.0)	159·119	活	27(20)·11(8.0)	9055·6642	憾	0(0)·1(1.0)	0·108
鎧	3(0.5)·0(0)	1.0·0	渴	3(2.5)·2(1.7)	83.8·43.0	換	8(5.8)·7(6.0)	443·2803
骸	1(0.8)·6(4.7)	2.0·28.0	滑	8(6.3)·3(2.8)	236·67.8	敢	3(3.0)·2(2.0)	34.0·15.8

Types		Tokens	Types		Tokens	Types		Tokens
K1·K2		K1·K2	K1·K2		K1·K2	K1·K2		K1·K2
柑	2(1.2)·2(1.0)	3.8·2.7	顏	8(5.8)·35(22)	149·1428	宜	1(0.2)·5(3.8)	0.2·181
桓	0(0)·0(0)	0·0	願	5(3.2)·23(17)	155·730	戲	8(4.5)·4(2.7)	166·31.8
棺	1(1.0)·9(4.7)	2.3·33.5	企	3(3.0)·1(0.5)	13194·0.8	技	13(12)·32(24)	3969·1950
款	0(0)·4(3.7)	0·91.0	伎	2(0.8)·0(0)	1.2·0	擬	10(5.3)·1(1.0)	15.5·99.7
歛	10(9.3)·3(2.5)	1282·38.2	危	9(7.0)·1(0.2)	3355·0.3	欺	0(0)·1(1.0)	0·380
汗	4(1.8)·6(4.3)	8.2·18.5	喜	5(3.7)·8(4.3)	179·49.7	犧	3(3.0)·1(0.3)	714·0.3
漢	17(11)·10(6.7)	400·64.0	器	10(9.0)·57(40)	279·4275	疑	8(7.2)·5(4.2)	3344·2381
澗	0(0)·0(0)	0·0	基	19(16)·5(3.5)	10904·67.2	祇	1(1.0)·2(0.5)	16.7·0.5
灌	3(0.8)·1(0.2)	1.0·0.2	奇	47(33)·7(5.0)	312·35.3	義	31(25)·42(32)	1331·3160
環	8(5.0)·10(6.8)	5059·805	嬉	2(0.5)·0(0)	0.5·0	蟻	1(0.2)·2(0.5)	0.2·0.5
甘	24(16)·1(0.7)	75.5·1.5	寄	20(14)·12(4.2)	1322·34.2	誼	0(0)·5(2.2)	0·4.3
監	14(12)·10(7.5)	8780·143	岐	1(1.0)·2(2.0)	47.2·44.3	譏	16(15)·51(43)	16323·22529
看	7(7.0)·1(0.5)	923·1.5	希	7(6.0)·1(1.0)	1975·16.5	掬	0(0)·1(0.3)	0·0.3
竿	6(1.7)·2(0.5)	4.5·0.7	幾	21(14)·0(0)	99.7·0	菊	7(3.0)·12(7.5)	7.0·37.8
管	20(15)·46(33)	3473·1571	忌	4(2.5)·9(4.8)	24.7·37.7	鞠	0(0)·2(1.3)	0·7.7
簡	10(8.8)·6(3.5)	645·334	揮	1(1.0)·2(2.0)	14.2·1429	吉	10(6.0)·5(3.2)	23.0·16.5
緩	10(6.2)·1(1.0)	973·35.2	机	2(1.3)·3(1.8)	31.2·3.7	吃	2(1.0)·0(0)	4.5·0
缶	1(1.0)·5(1.8)	90.2·6.0	旗	11(8.7)·22(14)	215·267	喫	5(3.7)·1(1.0)	337·41.2
翰	1(0.8)·2(0.7)	4.2·0.7	既	15(12)·1(0.2)	680·0.5	桔	1(0.8)·0(0)	1.5·0
肝	10(5.8)·3(1.8)	420·12.7	期	11(8.2)·68(61)	8307·12700	橘	0(0)·3(1.5)	0·4.2
艦	13(9.5)·19(11)	312·126	棋	11(9.0)·2(1.7)	272·299	詰	2(1.3)·13(5.2)	13.0·109
莞	1(0.8)·0(0)	7.0·0	棄	5(4.7)·8(6.0)	577·1742	砧	0(0)·0(0)	0·0
觀	24(20)·30(23)	4269·941	機	47(38)·53(37)	11177·4490	杵	1(0.5)·2(0.3)	0.7·0.3
諫	2(0.5)·0(0)	0.5·0	埽	42(30)·8(5.3)	3002·1244	黍	0(0)·0(0)	0·0
貫	12(8.8)·9(4.7)	129·434	毅	1(1.0)·1(0.8)	52.3·6.7	却	1(1.0)·17(14)	128·2377
還	6(5.5)·9(8.7)	411·2373	氣	69(54)·118(88)	3584·12616	客	25(18)·34(27)	688·2447
鑑	6(5.7)·10(7.0)	483·145	汽	5(4.2)·0(0)	118·0	脚	15(10)·18(16)	550·236
間	45(32)·94(70)	693·26255	畿	1(1.0)·1(0.7)	8.3·4.2	虐	3(2.2)·4(3.2)	611·73.8
閑	12(6.3)·9(4.3)	43.7·8.5	祈	4(3.0)·0(0)	150·0	逆	35(22)·6(2.3)	1772·32.2
閱	18(16)·12(11)	17061·3914	季	6(4.3)·19(14)	740·2735	丘	1(1.0)·7(4.5)	67.0·45.2
陷	2(2.0)·2(1.3)	87.7·308	稀	5(2.7)·1(0.8)	14.2·1.0	久	4(1.3)·9(7.3)	2.2·261
韓	3(1.0)·6(5.2)	1.3·244	紀	5(4.0)·14(10)	101·2277	仇	4(2.7)·1(0.2)	8.3·0.2
館	6(6.0)·24(20)	286·2020	徽	1(0.3)·0(0)	0.3·0	休	30(27)·20(16)	1954·535
館	0(0)·0(0)	0·0	規	14(13)·12(9.0)	7748·1175	及	1(1.0)·7(5.7)	11.2·2652
丸	29(15)·9(5.3)	184·112	記	13(13)·51(38)	12147·2461	吸	15(9.8)·1(1.0)	502·343
含	4(3.3)·3(1.7)	30.2·8.2	貴	30(17)·6(4.7)	153·50.5	宮	20(11)·37(24)	458·537
岸	3(2.2)·23(22)	103·1223	起	27(21)·23(18)	2389·859	弓	8(4.5)·9(3.8)	31.2·51.7
巖	3(0.8)·2(0.3)	1.2·0.3	軌	4(2.5)·4(2.3)	566·17.8	急	42(37)·15(12)	2462·2285
玩	3(1.7)·1(0.8)	52.3·1.8	輝	3(1.3)·2(1.0)	4.2·3.3	救	13(11)·0(0)	2635·0
癌	0(0)·6(3.2)	0·6.5	飢	3(1.8)·0(0)	129·0	朽	2(1.2)·3(2.8)	4.5·27.5
眼	20(16)·44(29)	331·227	騎	8(6.0)·3(1.2)	200·3.5	求	9(7.8)·7(6.8)	569·4765
岩	35(24)·12(6.8)	295·59.7	鬼	17(12)·8(4.5)	49.3·11.0	汲	0(0)·3(1.5)	0·1.8
翫	0(0)·1(0.2)	0·0.2	龜	5(2.7)·7(2.3)	307·4.3	泣	1(0.2)·4(1.5)	0.2·18.3
贗	3(1.7)·1(1.0)	11.2·6.3	偽	18(12)·3(2.8)	602·328	灸	1(0.2)·1(0.7)	0.2·2.5
雁	6(3.5)·3(1.0)	9.5·2.0	儀	4(3.2)·23(13)	234·2152	球	30(25)·52(37)	1839·6822
頑	6(5.3)·0(0)	61.2·0	妓	3(0.7)·5(3.2)	0.8·23.7	究	2(2.0)·7(5.0)	368·5204

Types		Tokens	Types		Tokens	Types		Tokens
K1·K2		K1·K2	K1·K2		K1·K2	K1·K2		K1·K2
窮	11(7.8)·4(2.8)	191·41.0	況	0(0)·20(17)	0·6963	九	33(27)·11(9.8)	13856·4021
笈	0(0)·0(0)	0·0	狂	20(13)·9(4.2)	239·109	俱	0(0)·0(0)	0·0
級	4(3.5)·20(17)	52.0·1336	狭	7(5.2)·3(2.0)	23.8·16.0	句	24(11)·48(33)	92.8·868
糾	3(3.0)·1(1.0)	70.2·74.7	矯	3(1.8)·1(0.3)	56.3·0.7	区	27(22)·18(15)	1597·2037
給	15(12)·26(22)	1792·3586	胸	30(18)·5(2.5)	134·48.5	狗	1(0.7)·2(1.7)	0.7·19.2
旧	65(42)·6(4.3)	486·560	脅	2(2.0)·0(0)	711·0	玖	0(0)·0(0)	0·0
牛	21(13)·20(13)	476·125	興	15(12)·15(13)	1270·1998	矩	1(0.7)·1(1.0)	1.5·1.8
去	6(5.2)·9(8.0)	705·6230	蓄	1(0.7)·0(0)	4.5·0	苦	35(30)·14(9.8)	2615·42.3
居	17(12)·43(29)	406·1667	郷	13(7.7)·16(9.7)	204·634	軀	0(0)·6(2.2)	0·3.0
巨	35(24)·0(0)	1796·0	鏡	11(5.2)·13(5.0)	17.8·122	馭	6(4.7)·4(3.2)	327·53.8
拒	3(2.8)·2(0.8)	1730·1.2	響	1(0.8)·8(6.0)	0.8·5643	駟	0(0)·0(0)	0·0
拋	3(3.0)·10(8.7)	1324·1807	饗	1(0.8)·1(0.3)	9.2·0.5	駒	7(1.8)·7(4.3)	4.8·10.0
拳	13(8.3)·18(14)	115·6771	驚	5(2.7)·2(0.8)	36.2·0.8	具	9(7.3)·41(30)	903·1175
渠	0(0)·2(1.2)	0·2.0	仰	4(2.2)·5(3.0)	21.3·262	愚	24(15)·6(2.0)	94.3·3.5
虚	20(17)·4(3.2)	454·107	凝	9(5.8)·1(0.2)	144·0.2	虞	0(0)·0(0)	0·0
許	7(4.8)·15(5.5)	989·578	堯	0(0)·0(0)	0·0	喰	1(0.2)·4(1.5)	0.5·4.0
距	1(1.0)·0(0)	979·0	曉	9(2.5)·8(2.8)	6.3·3.8	空	71(50)·29(26)	5329·2858
鋸	1(0.2)·1(0.5)	0.2·0.7	業	21(15)·111(85)	10019·33700	偶	5(5.0)·4(2.3)	221·21.5
漁	25(19)·14(11)	1397·107	局	17(13)·35(28)	2410·6641	寓	3(2.2)·2(0.5)	27.0·0.5
禦	0(0)·2(0.5)	0·0.5	曲	32(17)·43(35)	262·1093	遇	0(0)·14(13)	0·833
魚	40(22)·52(29)	133·199	極	38(30)·27(20)	873·857	隅	2(0.8)·4(3.2)	3.2·106
亨	0(0)·0(0)	0·0	玉	40(20)·38(21)	73.5·386	串	0(0)·3(1.0)	0·3.2
享	7(5.5)·3(0.8)	104·1.7	桐	0(0)·3(1.5)	0·2.7	櫛	1(0.2)·1(0.7)	0.2·0.7
京	17(11)·10(8.3)	75.8·662	籽	0(0)·0(0)	0·0	釧	0(0)·1(0.2)	0·0.2
供	17(14)·6(3.8)	2847·6689	僅	2(1.0)·0(0)	3.7·0	屑	2(0.5)·8(3.0)	0.5·6.0
俠	4(2.2)·5(3.0)	6.5·10.7	勤	14(10)·17(14)	1077·998	屈	11(9.7)·10(7.3)	303·283
僑	1(0.2)·3(1.7)	0.2·11.5	均	6(5.5)·2(2.0)	411·2322	掘	4(3.0)·5(4.7)	65.0·487
兇	3(0.5)·1(0.2)	0.7·0.2	巾	1(0.8)·6(2.7)	3.8·6.5	窟	0(0)·6(3.8)	0·35.8
競	17(14)·1(0.5)	4185·0.7	錦	12(5.7)·6(1.7)	21.3·2.7	沓	2(0.7)·2(0.3)	2.0·0.5
共	36(29)·10(6.3)	7356·1021	斤	1(0.2)·0(0)	0.2·0	靴	10(7.0)·11(6.2)	82.0·46.2
凶	15(8.7)·4(3.8)	271·62.7	欣	2(0.5)·0(0)	0.5·0	轡	0(0)·0(0)	0·0
協	16(15)·9(7.3)	17873·2120	欽	1(0.3)·0(0)	0.3·0	窪	2(1.7)·0(0)	13.0·0
匡	1(0.2)·0(0)	0.2·0	琴	4(1.7)·14(7.2)	10.8·16.8	熊	6(2.3)·3(1.2)	7.2·2.3
卿	0(0)·1(1.0)	0·2.3	禁	26(19)·10(9.2)	2709·825	隈	1(0.2)·2(1.2)	0.2·6.5
叫	1(0.5)·2(1.8)	0.5·27.0	禽	1(0.2)·3(2.2)	0.2·5.7	彙	0(0)·0(0)	0·0
喬	1(0.3)·0(0)	0.5·0	筋	14(8.7)·31(23)	328·989	栗	4(1.5)·6(2.0)	4.0·10.0
境	7(6.5)·26(20)	406·6362	緊	7(6.3)·1(0.8)	3010·1.2	繰	4(2.5)·3(0.7)	15.0·0.7
峡	1(1.0)·5(3.0)	8.7·73.3	芹	0(0)·1(0.2)	0·0.2	桑	5(3.7)·3(1.3)	121·3.3
強	62(48)·12(8.7)	9666·2077	菌	6(2.7)·16(13)	14.3·404	鋏	0(0)·3(0.7)	0·0.7
彊	0(0)·0(0)	0·0	衿	0(0)·0(0)	0·0	勳	7(4.7)·8(5.2)	109·127
怯	0(0)·1(1.0)	0·8.0	襟	4(2.7)·8(3.2)	7.8·8.8	君	7(4.7)·31(18)	104·114
恐	7(5.3)·0(0)	799·0	謹	7(3.3)·0(0)	33.0·0	薰	6(3.3)·0(0)	13.0·0
恭	4(1.8)·0(0)	4.7·0	近	50(38)·18(14)	2493·6323	訓	11(7.8)·14(9.3)	1278·463
挾	2(1.8)·1(0.2)	8.5·0.7	金	112(75)·109(77)	9062·18694	群	30(17)·11(7.8)	228·110
教	59(51)·39(32)	14996·1917	吟	6(4.0)·14(5.7)	93.0·13.7	軍	70(52)·46(36)	3846·4591
橋	18(9.2)·26(17)	115·389	銀	51(28)·17(15)	5912·844	郡	6(3.7)·2(0.7)	24.5·0.7

Types		Tokens	Types		Tokens	Types		Tokens
K1•K2		K1•K2	K1•K2		K1•K2	K1•K2		K1•K2
卦	0(0)•2(1.2)	0•2.3	激	28(24)•6(5.2)	1444•1005	驗	1(0.2)•9(8.5)	0.2•8308
袈	1(1.0)•0(0)	10.8•0	隙	1(1.0)•2(1.5)	9.0•5.0	嶮	0(0)•1(1.0)	0•6.0
袪	0(0)•0(0)	0•0	桁	2(0.3)•6(1.7)	0.5•3.7	元	50(35)•52(42)	1450•5212
係	9(8.5)•2(2.0)	382•9331	傑	4(3.0)•7(5.2)	115•45.2	原	87(70)•39(29)	10742•754
傾	9(6.8)•3(3.0)	1720•23.0	欠	22(18)•8(5.7)	1303•76.7	巖	19(16)•10(7.7)	379•176
刑	13(8.3)•17(13)	695•1176	決	20(20)•23(18)	12262•8765	幻	15(11)•2(2.0)	262•11.0
兄	10(6.2)•10(8.2)	533•85.2	潔	3(2.3)•6(5.8)	40.7•86.5	弦	5(2.5)•8(5.0)	53.0•14.3
啓	4(3.3)•4(2.3)	134•10.2	穴	9(4.0)•19(15)	10.8•168	減	37(30)•19(18)	5305•4400
圭	0(0)•0(0)	0•0	結	41(34)•25(17)	14078•2672	源	3(3.0)•19(17)	135•2308
珪	6(1.2)•0(0)	2.5•0	血	44(34)•38(28)	1171•844	玄	10(6.0)•1(1.0)	449•2.8
型	10(6.0)•53(39)	49.5•3507	訣	1(1.0)•3(1.8)	3.3•14.2	現	42(33)•12(10)	21372•6759
契	4(2.8)•3(1.3)	2842•18.3	月	75(49)•84(61)	2412•41328	絃	1(0.3)•3(1.8)	0.3•5.3
形	20(15)•88(61)	1535•1506	件	2(1.5)•13(12)	362•13780	舷	2(0.8)•4(3.0)	1.5•14.2
徑	0(0)•11(8.7)	0•600	儉	1(1.0)•3(1.0)	19.7•1.5	言	23(17)•88(60)	6184•9608
惠	5(0.8)•9(7.0)	1.3•672	倦	1(1.0)•0(0)	4.3•0	諺	1(0.2)•2(0.3)	0.2•0.3
慶	13(8.2)•7(4.5)	49.7•34.0	健	14(12)•7(5.3)	1807•593	限	6(4.5)•21(18)	1796•4333
慧	2(1.2)•1(0.7)	1.8•1.2	兼	12(9.3)•0(0)	308•0	乎	0(0)•2(0.7)	0•0.7
憩	1(1.0)•1(1.0)	12.8•110	券	2(0.8)•14(11)	2.8•2358	個	17(12)•7(5.5)	5367•244
揭	4(3.8)•3(2.7)	1443•12.5	劍	17(12)•18(9.7)	144•153	古	93(62)•17(13)	1334•276
携	2(2.0)•3(3.0)	842•1689	喧	3(3.0)•0(0)	23.0•0	呼	10(6.7)•3(3.0)	516•42.0
敬	16(12)•10(8.3)	492•291	圈	5(2.5)•5(2.5)	56.2•10.8	固	12(11)•13(11)	849•305
景	12(8.2)•34(25)	4603•3676	堅	18(11)•1(1.0)	383•588	姑	1(1.0)•1(0.7)	11.5•2.5
桂	4(2.5)•2(1.2)	8.7•1.8	嫌	6(4.5)•1(1.0)	157•39.0	孤	20(11)•0(0)	759•0
溪	4(2.7)•3(1.5)	61.0•6.0	建	36(20)•13(7.7)	7239•1053	己	3(0.5)•5(3.8)	0.5•1334
畦	1(1.0)•0(0)	1.7•0	憲	4(4.0)•9(7.7)	2264•898	庫	2(1.0)•14(13)	4.8•1638
稽	1(1.0)•2(1.2)	19.5•18.3	懸	13(7.3)•2(0.8)	2419•1.0	弧	2(0.7)•2(1.8)	1.3•2.7
系	4(4.0)•28(20)	768•1044	拳	4(2.8)•2(1.2)	13.0•3.8	戶	13(10)•37(24)	369•1347
經	39(27)•26(14)	21155•609	捲	0(0)•1(0.7)	0•1.2	故	16(12)•6(5.2)	1377•3081
繼	16(9.0)•9(4.2)	1845•817	檢	38(30)•17(13)	11297•2121	枯	10(6.0)•2(0.5)	62.2•0.5
繫	3(0.7)•1(0.2)	0.8•0.2	權	21(15)•51(38)	3552•13142	湖	11(9.0)•4(1.5)	136•2.0
罍	1(0.7)•1(0.2)	1.0•0.2	牽	4(3.0)•0(0)	26.8•0	狐	5(1.8)•6(2.0)	4.2•4.2
莖	2(0.8)•10(5.8)	2.8•32.7	犬	7(4.7)•26(17)	38.5•115	糊	2(1.3)•2(0.8)	8.7•0.8
荊	1(0.2)•0(0)	0.2•0	獻	21(13)•4(3.2)	1566•1285	袴	2(0.3)•3(0.7)	0.3•1.0
蚩	6(3.5)•0(0)	23.0•0	研	6(3.5)•9(5.3)	5868•140	股	5(2.5)•9(4.3)	6.3•8.7
計	11(9.5)•30(23)	8659•4156	硯	1(0.3)•0(0)	0.3•0	胡	11(6.2)•1(1.0)	31.5•4.2
詣	0(0)•5(3.3)	0•13.8	絹	8(4.3)•6(2.2)	15.0•4.3	菰	0(0)•1(0.2)	0•0.2
警	24(20)•8(6.7)	4944•1972	梟	38(33)•12(8.5)	4074•950	虎	7(1.5)•8(5.0)	2.7•16.8
輕	33(25)•6(5.0)	976•72.0	肩	16(9.0)•7(6.3)	243•55.3	誇	3(3.0)•0(0)	145•0
頸	2(1.3)•0(0)	8.8•0	見	55(38)•73(53)	5241•8889	跨	0(0)•0(0)	0•0
鷄	11(6.2)•12(6.3)	96.7•46.3	謙	5(2.7)•1(1.0)	26.3•5.3	鈷	0(0)•1(0.3)	0•0.5
芸	18(15)•33(23)	1353•911	賢	17(7.7)•7(3.5)	85.0•5.7	雇	3(1.7)•3(2.2)	1728•430
迎	6(4.2)•4(3.0)	72.2•1066	軒	10(4.8)•3(3.0)	55.2•100	顧	3(2.8)•6(3.5)	1388•95.3
鯨	8(2.8)•3(2.0)	15.3•184	遣	3(2.3)•6(4.0)	7.5•2515	鼓	12(6.3)•11(5.8)	68.3•160
劇	13(12)•24(19)	1981•1372	鍵	2(1.2)•6(1.8)	12.7•4.0	五	75(55)•13(13)	17515•7155
戟	0(0)•2(0.8)	0•3.0	險	4(1.7)•8(5.2)	15.2•2889	互	8(6.0)•2(2.0)	150•723
擊	8(6.0)•28(26)	150•5607	頭	11(6.8)•2(0.3)	116•0.7	伍	1(1.0)•2(1.0)	5.5•2.2

Types			Tokens			Types			Tokens			Types			Tokens		
K1·K2		K1·K2	K1·K2		K1·K2	K1·K2		K1·K2	K1·K2		K1·K2	K1·K2		K1·K2	K1·K2		K1·K2
午	8(4.7)·6(4.2)	16562·662	恒	7(5.8)·0(0)	386·0	降	28(17)·11(8.8)	481·3373									
吳	8(3.3)·0(0)	13.0·0	慌	0(0)·1(1.0)	0·28.8	項	1(1.0)·8(7.2)	1228·898									
吾	6(3.7)·0(0)	18.2·0	抗	18(14)·3(3.0)	1782·2105	香	22(15)·21(9.7)	125·70.5									
娛	1(1.0)·0(0)	224·0	拘	6(5.7)·0(0)	779·0	高	127(94)·59(40)	8952·5426									
後	121(68)·53(42)	5179·27280	控	5(3.3)·1(0.2)	528·0.2	鴻	4(0.8)·0(0)	1.3·0									
御	94(44)·15(7.7)	255·409	攻	7(5.7)·14(12)	3089·719	剛	11(6.2)·2(1.2)	19.3·7.3									
悟	2(0.7)·3(2.5)	0.8·553	昂	3(1.7)·2(0.8)	2.8·2.0	劫	3(0.8)·2(1.7)	1.0·3.8									
梧	1(0.8)·1(0.2)	1.7·0.2	晃	0(0)·0(0)	0·0	号	8(6.2)·38(27)	97.0·1115									
檣	0(0)·1(1.0)	0·7.8	更	8(8.0)·10(5.7)	1180·1564	合	61(46)·92(63)	11509·26300									
瑚	0(0)·1(1.0)	0·2.2	杭	0(0)·1(0.2)	0·0.2	壕	0(0)·0(0)	0·0									
碁	8(4.5)·3(1.7)	35.2·220	校	36(27)·34(30)	1336·8852	拷	1(1.0)·0(0)	80.8·0									
語	33(20)·70(48)	307·3634	梗	2(1.3)·1(0.8)	2.7·1.5	濠	0(0)·2(1.2)	0·3.2									
誤	24(20)·3(2.7)	760·18.0	構	10(8.0)·17(10)	5894·1845	豪	18(14)·10(7.7)	227·293									
護	10(9.8)·19(17)	447·6294	江	8(5.8)·7(5.3)	281·107	轟	3(1.5)·0(0)	7.7·0									
醐	0(0)·1(1.0)	0·5.5	洪	3(1.7)·0(0)	241·0	趨	2(1.5)·1(0.3)	5.0·0.3									
乞	1(1.0)·3(1.7)	8.8·2.5	浩	1(0.7)·0(0)	1.5·0	克	5(3.5)·3(2.2)	411·17.3									
鯉	1(0.2)·4(1.2)	0.2·1.8	港	7(5.7)·20(15)	351·2020	刻	6(4.3)·25(20)	34.8·851									
交	33(28)·23(15)	10665·2402	溝	0(0)·5(2.5)	0·21.8	告	10(7.2)·26(22)	1361·13686									
佼	0(0)·0(0)	0·0	甲	15(9.3)·6(4.3)	111·20.8	国	133(100)·95(77)	34347·21834									
侯	2(1.2)·2(2.0)	5.5·13.2	皇	24(15)·8(6.5)	782·680	穀	5(3.3)·5(4.7)	182·89.5									
候	3(1.5)·9(7.5)	2524·637	硬	14(11)·2(1.3)	378·428	酷	7(5.8)·4(4.0)	104·49.7									
倖	0(0)·0(0)	0·0	稿	2(1.2)·24(16)	2.2·761	鵠	0(0)·1(0.7)	0·1.0									
光	39(25)·74(49)	662·1397	糠	2(0.5)·3(1.0)	1.0·1.3	黒	74(44)·11(7.0)	2170·147									
公	112(91)·12(6.2)	18524·41.8	紅	23(16)·11(6.8)	296·70.2	獄	7(3.7)·14(10)	101·278									
功	11(7.3)·12(7.7)	228·1719	紘	0(0)·1(0.8)	0·3.7	漉	0(0)·2(0.8)	0·0.8									
効	6(5.5)·15(10)	3245·1795	絞	3(1.7)·0(0)	26.7·0	腰	15(8.2)·11(8.7)	156·206									
勾	5(2.8)·0(0)	9.5·0	綱	7(3.7)·11(7.7)	160·1429	甌	0(0)·0(0)	0·0									
厚	24(15)·8(4.8)	719·43.0	耕	8(3.8)·10(4.8)	129·58.5	忽	1(1.0)·1(1.0)	3.2·9.8									
口	65(44)·82(58)	1656·4138	考	10(9.3)·16(12)	921·1533	惚	0(0)·1(1.0)	0·1.5									
向	10(4.7)·30(21)	898·7417	肯	1(1.0)·1(0.7)	129·2.2	骨	28(18)·61(37)	798·553									
后	1(0.3)·6(2.7)	0.3·214	肱	0(0)·1(0.2)	0·0.2	狛	1(0.8)·0(0)	1.8·0									
喉	3(1.8)·1(1.0)	10.2·4.8	腔	1(0.3)·5(4.0)	0.7·33.2	込	0(0)·8(5.5)	0·87.0									
坑	8(4.8)·10(5.7)	42.3·34.8	膏	1(0.5)·2(1.7)	0.8·7.3	此	8(2.3)·1(0.3)	4.2·0.3									
垢	2(0.3)·5(3.0)	0.3·20.7	航	16(9.5)·24(19)	2213·1342	頃	2(0.7)·10(5.0)	0.8·11.8									
好	45(33)·15(12)	1824·1128	荒	36(21)·6(1.5)	281·1.8	今	61(50)·8(4.8)	32256·189									
孔	4(2.8)·7(3.3)	30.0·15.0	行	72(47)·139(112)	10685·22606	困	6(4.5)·1(1.0)	879·400									
孝	12(6.8)·3(1.5)	84.7·2.8	衡	3(1.5)·6(2.7)	4.0·274	坤	0(0)·1(0.3)	0·0.7									
宏	1(0.3)·0(0)	0.3·0	講	20(15)·13(9.2)	2843·314	墾	1(0.2)·2(1.2)	0.2·18.3									
工	37(31)·47(38)	7263·1990	貢	3(1.5)·4(2.7)	1136·12.2	婚	8(5.8)·15(13)	179·2420									
巧	9(4.8)·6(3.0)	62.7·32.2	購	3(3.0)·0(0)	1982·0	恨	0(0)·7(5.5)	0·67.2									
巷	3(1.8)·0(0)	5.2·0	郊	2(1.5)·4(3.7)	566·283	懇	8(6.0)·0(0)	292·0									
幸	6(4.0)·11(6.8)	212·157	酵	2(2.0)·2(1.3)	137·83.0	昏	3(1.5)·1(1.0)	10.7·11.5									
広	24(17)·4(4.0)	2718·142	鉦	16(13)·16(9.0)	276·206	昆	3(3.0)·1(0.2)	183·0.2									
庚	2(1.2)·1(0.2)	1.8·0.3	砵	0(0)·1(0.8)	0·1.7	根	37(24)·45(29)	1594·885									
康	4(1.3)·3(2.2)	1.8·1292	鋼	11(7.5)·10(6.8)	231·582	梱	1(1.0)·0(0)	12.0·0									
弘	9(4.2)·2(0.3)	15.5·0.5	閣	0(0)·1(1.0)	0·12.2	混	29(24)·0(0)	2421·0									

Types		Tokens	Types		Tokens	Types		Tokens
K1 • K2		K1 • K2	K1 • K2		K1 • K2	K1 • K2		K1 • K2
痕	1(1.0) • 7(5.0)	60.7 • 55.0	際	5(3.0) • 21(17)	40.5 • 7107	鮫	1(0.2) • 0(0)	0.3 • 0
紺	6(4.3) • 2(2.0)	38.2 • 19.3	劑	0(0) • 14(11)	0 • 1033	皿	2(0.5) • 12(6.3)	0.8 • 41.2
艮	0(0) • 0(0)	0 • 0	在	43(33) • 23(22)	2693 • 11948	晒	0(0) • 2(0.3)	0 • 0.7
魂	2(1.2) • 18(11)	9.0 • 79.8	材	5(4.2) • 48(36)	1024 • 4726	三	173(131) • 19(17)	23047 • 4418
些	4(2.5) • 0(0)	7.3 • 0	罪	13(9.8) • 19(17)	100 • 2694	傘	6(3.0) • 6(4.3)	239 • 22.7
佐	2(1.7) • 11(8.8)	79.8 • 354	財	15(14) • 12(10)	6436 • 217	參	30(25) • 19(13)	13040 • 312
叉	0(0) • 4(3.3)	0 • 12.0	冴	0(0) • 0(0)	0 • 0	山	142(91) • 113(80)	2008 • 1740
唆	0(0) • 2(2.0)	0 • 655	坂	6(5.0) • 8(5.2)	99.8 • 40.0	慘	10(7.3) • 4(3.2)	357 • 39.3
嵯	0(0) • 0(0)	0 • 0	阪	0(0) • 1(1.0)	0 • 7.5	撒	0(0) • 2(0.3)	0 • 0.3
左	35(28) • 3(3.0)	1993 • 33.3	堺	0(0) • 0(0)	0 • 0	散	27(21) • 17(15)	658 • 2447
差	15(7.7) • 34(24)	1317 • 1790	榭	0(0) • 0(0)	0 • 0	棧	5(2.7) • 0(0)	31.8 • 0
查	5(4.2) • 13(13)	1082 • 14776	肴	0(0) • 1(0.3)	0 • 1.2	燦	2(1.0) • 1(0.3)	2.3 • 0.7
沙	6(3.7) • 3(0.8)	11.3 • 1.0	咲	0(0) • 3(1.0)	0 • 1.3	珊	1(1.0) • 0(0)	2.2 • 0
磋	0(0) • 0(0)	0 • 0	崎	0(0) • 3(2.7)	0 • 62.2	産	36(28) • 58(51)	3508 • 9452
砂	29(23) • 15(8.8)	764 • 226	埼	0(0) • 0(0)	0 • 0	算	13(9.7) • 38(29)	505 • 9332
詐	5(4.8) • 0(0)	420 • 0	碕	0(0) • 0(0)	0 • 0	纂	0(0) • 1(1.0)	0 • 18.2
鎖	4(2.3) • 7(4.7)	52.8 • 911	鷺	0(0) • 4(2.3)	0 • 7.0	蚕	5(4.0) • 7(2.5)	21.2 • 24.7
裳	0(0) • 1(1.0)	0 • 10.8	作	50(37) • 111(81)	12454 • 5774	讚	5(2.7) • 5(2.0)	12.2 • 3.0
坐	4(2.0) • 3(0.5)	11.7 • 0.5	削	4(2.3) • 5(3.8)	3304 • 96.2	贊	10(9.5) • 10(7.7)	2134 • 445
座	34(23) • 56(37)	935 • 2146	咋	0(0) • 0(0)	0 • 0	酸	8(6.8) • 19(14)	321 • 233
挫	4(2.7) • 2(1.5)	184 • 13.2	搾	3(2.5) • 1(0.5)	43.3 • 0.5	餐	0(0) • 5(1.7)	0 • 5.2
債	4(3.2) • 16(10)	4198 • 1263	昨	13(12) • 1(1.0)	13127 • 50.8	斬	5(2.8) • 2(0.8)	31.0 • 1.8
催	7(6.7) • 5(4.2)	65.7 • 4808	朔	4(1.5) • 1(0.3)	3.0 • 0.7	暫	2(2.0) • 0(0)	664 • 0
再	51(37) • 1(0.2)	7666 • 0.3	柵	0(0) • 3(1.3)	0 • 1.7	殘	42(33) • 5(3.8)	1745 • 68.8
最	37(34) • 0(0)	20314 • 0	窄	0(0) • 1(1.0)	0 • 3.8	仕	26(15) • 7(3.3)	5602 • 153
哉	0(0) • 2(1.5)	0 • 5.3	策	6(5.3) • 26(21)	463 • 14308	仔	4(1.8) • 0(0)	4.3 • 0
塞	3(1.5) • 7(4.3)	2.8 • 89.8	索	8(2.8) • 9(7.5)	36.5 • 1364	伺	1(0.2) • 0(0)	0.3 • 0
妻	13(7.7) • 26(19)	90.3 • 594	錯	9(5.2) • 4(2.8)	124 • 136	使	9(7.3) • 23(15)	3260 • 2977
宰	3(1.3) • 2(2.0)	30.3 • 256	桜	16(11) • 10(6.2)	39.2 • 32.8	刺	13(8.3) • 5(2.8)	863 • 212
彩	7(3.3) • 16(12)	30.3 • 476	鮭	1(0.3) • 2(0.3)	0.3 • 0.7	司	12(10) • 18(12)	924 • 643
才	17(9.7) • 29(18)	294 • 284	笹	10(3.0) • 1(0.7)	4.5 • 1.0	史	22(16) • 35(22)	1311 • 2992
採	26(22) • 1(1.0)	4492 • 167	匙	0(0) • 2(0.7)	0 • 1.2	嗣	1(0.7) • 4(0.8)	1.2 • 0.8
栽	2(1.2) • 3(2.2)	391 • 42.3	冊	3(2.8) • 6(4.8)	107 • 58.7	四	78(58) • 14(14)	17573 • 7461
歲	18(12) • 14(9.0)	848 • 649	刷	5(3.0) • 6(4.2)	149 • 494	士	9(6.0) • 63(45)	101 • 3263
濟	3(1.0) • 10(7.8)	1.8 • 11990	察	1(1.0) • 18(15)	61.0 • 5018	始	11(9.0) • 10(7.0)	265 • 2079
災	5(5.0) • 12(9.8)	1058 • 3260	拶	0(0) • 1(1.0)	0 • 25.8	姉	8(4.3) • 9(6.2)	210 • 54.3
采	2(1.3) • 3(1.8)	5.5 • 19.7	撮	1(1.0) • 3(2.2)	1169 • 34.0	姿	7(4.5) • 17(11)	4646 • 80.0
犀	2(0.7) • 1(0.5)	0.8 • 1.2	擦	3(0.7) • 2(1.2)	0.7 • 281	子	41(27) • 207(145)	4660 • 13307
碎	5(2.5) • 5(3.3)	14.7 • 71.0	札	5(2.7) • 36(24)	43.5 • 1429	屍	4(1.3) • 2(1.7)	2.0 • 6.0
砦	0(0) • 3(1.8)	0 • 5.2	殺	13(12) • 42(30)	2339 • 2121	市	49(41) • 17(13)	12476 • 2095
祭	17(14) • 26(13)	237 • 122	薩	1(1.0) • 2(1.2)	15.8 • 10.2	師	17(9.5) • 50(34)	466 • 4939
齋	8(3.5) • 3(1.5)	227 • 54.0	雜	55(38) • 9(6.2)	1707 • 249	志	8(5.8) • 20(15)	815 • 652
細	37(24) • 15(12)	1363 • 358	臯	1(0.8) • 0(0)	1.8 • 0	思	16(12) • 14(5.3)	1717 • 1394
菜	10(6.2) • 26(15)	33.2 • 863	鯖	1(0.2) • 1(0.3)	0.5 • 0.3	指	27(23) • 18(15)	13719 • 272
裁	8(7.8) • 20(15)	1831 • 6236	捌	0(0) • 1(0.2)	0 • 0.2	支	26(22) • 4(2.7)	16587 • 416
載	1(0.2) • 19(16)	0.2 • 2619	鏹	3(0.5) • 3(0.7)	0.5 • 1.0	孜	0(0) • 0(0)	0 • 0

	Types		Tokens			Types		Tokens			Types		Tokens	
	K1	K2	K1	K2		K1	K2	K1	K2		K1	K2	K1	K2
斯	4(1.3)	1(0.5)	2.0	0.8	自	127(105)	10(8.7)	31646	972	邪	15(10)	2(1.8)	136	177
施	12(9.5)	3(3.0)	5361	5438	蒔	1(1.0)	1(0.3)	7.7	0.5	借	14(9.8)	9(6.2)	1005	51.5
旨	2(0.3)	8(7.2)	0.5	991	辞	12(10)	30(17)	2179	226	勺	0(0)	0(0)	0	0
枝	12(6.0)	20(8.8)	40.7	58.3	汐	1(0.7)	4(1.2)	1.0	1.8	尺	3(2.8)	13(7.5)	117	22.2
止	5(2.8)	19(13)	25.3	8573	鹿	5(2.7)	11(4.7)	7.7	20.5	杓	1(1.0)	2(0.5)	2.7	3.2
死	49(38)	55(39)	6554	2815	式	13(7.0)	49(37)	507	6319	灼	1(1.0)	0(0)	4.0	0
氏	7(4.2)	13(11)	625	1305	識	5(4.7)	18(15)	235	6236	爵	0(0)	7(5.7)	0	46.5
獅	1(1.0)	0(0)	45.0	0	嶋	0(0)	1(0.2)	0	0.2	酌	2(1.3)	8(3.8)	9.8	22.2
祉	0(0)	1(1.0)	0	1996	竺	0(0)	1(0.8)	0	1.2	积	7(4.3)	11(8.5)	625	871
私	61(46)	3(2.7)	1208	46.7	軸	7(3.3)	16(11)	68.2	310	錫	1(0.7)	0(0)	0.7	0
糸	15(5.5)	33(22)	131	162	穴	0(0)	0(0)	0	0	若	37(28)	7(4.3)	3228	12.7
紙	30(18)	69(47)	545	3094	雫	0(0)	1(0.2)	0	0.2	寂	4(2.0)	4(2.3)	4.8	34.8
紫	14(8.3)	9(6.2)	55.0	24.8	七	48(36)	14(14)	10476	8018	弱	24(16)	17(13)	666	172
肢	3(1.3)	7(4.7)	18.5	31.5	叱	3(1.5)	0(0)	12.3	0	惹	2(1.5)	0(0)	4.3	0
脂	8(5.3)	7(4.7)	152	140	執	10(9.5)	6(5.5)	1122	230	主	80(62)	68(48)	16824	4579
至	22(15)	5(3.5)	216	149	失	37(32)	15(12)	3565	1750	取	14(9.3)	50(30)	5903	1900
視	17(14)	34(27)	2740	4674	嫉	1(1.0)	0(0)	22.3	0	守	14(8.3)	37(24)	624	1614
詞	5(2.0)	25(17)	5.2	378	室	7(6.0)	65(50)	899	2519	手	141(88)	130(92)	7520	21072
詩	48(29)	20(11)	605	51.7	悉	1(0.7)	1(0.2)	1.5	0.3	朱	15(9.3)	2(0.7)	45.3	1.2
試	26(22)	9(5.3)	7621	556	湿	15(10)	10(6.2)	256	21.7	殊	4(3.3)	2(1.8)	66.2	256
誌	2(2.0)	21(16)	37.0	1331	漆	7(4.7)	6(3.0)	38.3	5.7	狩	3(2.2)	5(1.5)	52.5	1.7
諮	1(1.0)	0(0)	266	0	疾	5(5.0)	3(2.0)	287	4.3	珠	2(2.0)	9(4.7)	20.3	67.3
資	10(9.3)	18(14)	11509	8243	質	19(13)	65(48)	2654	4816	種	25(14)	58(45)	1794	3295
賜	3(2.2)	3(2.0)	26.5	11.3	実	91(78)	34(30)	23006	8035	腫	1(0.2)	7(4.8)	0.2	23.5
雌	9(5.2)	0(0)	24.2	0	葩	0(0)	1(0.2)	0	0.3	趣	3(3.0)	11(5.7)	1177	22.7
飼	5(2.3)	7(2.7)	85.3	4.5	篠	4(3.0)	0(0)	21.0	0	酒	46(29)	45(28)	378	280
齒	23(16)	21(12)	214	120	偲	0(0)	0(0)	0	0	首	26(17)	34(22)	19167	2397
事	30(24)	122(85)	28955	23674	柴	7(3.3)	3(1.0)	5.0	1.5	儒	7(3.5)	3(0.5)	45.2	0.5
似	4(2.2)	7(6.3)	135	221	芝	8(5.5)	3(0.7)	540	0.8	受	43(33)	18(12)	4016	358
侍	7(3.0)	7(2.8)	34.2	4.0	屢	0(0)	0(0)	0	0	呪	8(4.5)	0(0)	66.3	0
児	4(2.3)	27(22)	803	1652	蕊	0(0)	0(0)	0	0	寿	5(3.5)	16(11)	164	170
字	21(14)	54(35)	249	6018	縞	2(0.5)	2(1.0)	1.0	1.5	授	10(9.2)	6(3.0)	1648	3937
寺	21(11)	18(11)	174	71.5	舍	6(3.2)	30(22)	6.5	928	樹	24(18)	19(11)	757	130
慈	8(6.2)	3(1.0)	82.3	1.5	写	12(7.8)	18(14)	5226	341	綬	0(0)	3(2.0)	0	10.3
持	16(8.7)	31(16)	659	7798	射	15(10)	26(20)	461	1018	需	3(2.7)	10(8.8)	1702	326
時	57(44)	70(57)	20852	12155	捨	4(1.8)	3(1.7)	4.0	4.2	囚	3(1.5)	5(2.5)	42.7	5.8
次	24(21)	25(20)	3710	776	赦	1(1.0)	4(3.8)	30.5	147	収	26(22)	23(19)	5301	4794
滋	2(2.0)	0(0)	14.2	0	斜	13(7.3)	2(2.0)	185	164	周	16(13)	9(6.8)	3866	120
治	18(11)	25(18)	2472	8500	煮	9(6.5)	14(7.0)	117	44.3	宗	19(12)	17(11)	1342	80.2
爾	2(1.0)	1(0.8)	2.2	7.0	社	51(40)	45(34)	16190	20354	就	14(11)	2(2.0)	3635	75.3
璽	0(0)	3(1.0)	0	2.7	紗	1(1.0)	3(1.3)	3.3	4.0	州	22(15)	10(8.5)	218	82.5
痔	1(0.3)	0(0)	2.2	0	者	1(0.2)	114(85)	0.3	20212	修	29(25)	13(11)	2790	1299
磁	14(9.2)	3(3.0)	208	38.2	謝	8(6.2)	9(7.8)	834	751	愁	5(2.0)	8(6.2)	2.3	98.3
示	5(3.3)	24(22)	670	5863	車	37(27)	69(54)	1748	2818	拾	1(0.5)	1(1.0)	1.0	175
而	1(0.5)	1(0.2)	0.5	0.2	遮	4(3.5)	0(0)	91.7	0	洲	2(0.8)	2(1.3)	2.3	5.0
耳	15(8.2)	16(9.5)	63.7	59.2	蛇	7(4.7)	5(3.5)	79.3	11.5	秀	11(7.8)	2(1.8)	69.7	314

	Types		Tokens			Types		Tokens	
	K1·K2	K1·K2	K1·K2	K1·K2		K1·K2	K1·K2		
秋	39(22)·23(15)	206·1077	竣	1(1.0)·0(0)	6.7·0	唱	7(5.5)·23(18)	48.2·951	
終	38(29)·6(4.7)	3780·2554	舜	0(0)·0(0)	0·0	嘗	0(0)·2(1.0)	0·1.3	
績	0(0)·2(1.7)	0·10.0	駿	1(0.5)·1(1.0)	1.0·3.2	獎	3(2.5)·4(4.0)	201·77.8	
習	10(9.2)·27(22)	468·3586	淮	1(1.0)·1(1.0)	5.7·399	妾	0(0)·3(1.8)	0·3.2	
臭	5(4.2)·16(11)	36.5·163	循	1(1.0)·0(0)	167·0	娼	3(2.0)·5(3.2)	20.8·11.3	
舟	8(4.5)·18(8.0)	14.3·36.0	旬	4(2.5)·6(4.3)	12.2·3056	宵	5(1.8)·5(2.7)	2.7·7.5	
蒐	1(0.8)·0(0)	2.0·0	楯	1(0.2)·1(0.2)	0.2·0.2	將	10(7.8)·33(24)	3491·808	
衆	15(8.3)·17(12)	2397·1033	殉	6(4.8)·0(0)	40.5·0	小	260(165)·15(11)	4916·1612	
襲	3(3.0)·13(10)	414·475	淳	1(0.3)·0(0)	0.3·0	少	17(12)·14(10)	2794·1922	
讐	0(0)·3(2.5)	0·33.0	準	9(7.0)·6(5.3)	2326·4786	尚	6(3.8)·4(2.5)	15.2·15.2	
蹴	3(2.3)·2(1.7)	11.7·26.0	潤	4(3.2)·4(2.7)	20.7·54.2	庄	3(2.2)·0(0)	11.8·0	
輯	0(0)·1(0.2)	0·0.3	盾	0(0)·2(1.2)	0·496	床	11(6.7)·29(19)	93.2·534	
週	11(9.8)·18(18)	1784·1551	純	25(20)·4(3.3)	359·240	廠	0(0)·3(1.5)	0·3.8	
酋	1(0.5)·0(0)	2.5·0	巡	16(12)·2(1.5)	488·53.0	彰	0(0)·2(2.0)	0·312	
酬	0(0)·3(2.2)	0·610	遵	2(1.3)·0(0)	5.8·0	承	8(5.8)·11(6.3)	1817·957	
集	31(22)·31(25)	5272·4586	醇	2(0.7)·1(0.7)	0.7·1.2	抄	5(3.3)·1(0.2)	9.7·0.2	
醜	6(3.5)·2(1.8)	23.2·6.3	順	19(14)·19(14)	728·399	招	7(6.5)·1(0.2)	1185·0.2	
什	2(0.5)·0(0)	0.5·0	処	14(12)·16(8.0)	7584·627	掌	6(3.3)·7(5.7)	10.5·117	
住	15(12)·24(16)	8062·1374	初	102(76)·18(9.5)	3064·3826	捷	1(0.2)·2(1.2)	0.2·2.5	
充	11(9.5)·2(2.0)	1140·375	所	48(36)·85(54)	4749·5633	昇	14(13)·3(2.3)	904·1688	
十	35(28)·12(11)	17089·15185	暑	4(2.3)·12(8.2)	5.3·217	昌	1(0.2)·1(1.0)	0.7·1.7	
徙	19(14)·13(9.0)	2585·154	曙	2(0.8)·0(0)	3.2·0	昭	3(1.7)·0(0)	369·0	
戎	0(0)·1(0.2)	0·0.2	渚	0(0)·0(0)	0·0	晶	0(0)·4(3.7)	0·280	
柔	8(4.7)·4(1.7)	625·16.0	庶	5(3.2)·0(0)	361·0	松	22(14)·20(13)	146·153	
汁	5(3.0)·21(12)	34.8·148	緒	2(1.0)·7(6.8)	6.0·826	梢	0(0)·1(0.8)	0·3.3	
洩	8(4.7)·5(3.8)	257·67.5	署	4(4.0)·14(9.8)	1277·546	樟	1(1.0)·0(0)	1.7·0	
獸	9(3.2)·19(11)	5.3·137	書	61(41)·134(83)	3063·5907	樵	0(0)·0(0)	0·0	
縱	20(15)·3(2.0)	220·208	薯	0(0)·1(0.3)	0·0.5	沼	7(3.8)·3(2.8)	19.8·123	
重	69(55)·31(27)	4830·2547	藹	0(0)·1(0.5)	0·1.0	消	27(21)·10(4.8)	3417·1058	
銃	21(15)·6(5.2)	686·451	藹	53(29)·0(0)	2018·0	涉	2(2.0)·3(2.2)	40.5·4958	
叔	2(2.0)·0(0)	88.3·0	助	15(13)·22(17)	1388·3542	湘	0(0)·0(0)	0·0	
夙	0(0)·0(0)	0·0	叙	7(5.5)·3(0.8)	131·1.0	燒	25(13)·17(10)	557·281	
宿	33(20)·20(15)	1104·512	女	68(45)·76(52)	12272·4875	焦	6(4.3)·1(0.2)	1379·0.7	
淑	3(2.3)·2(1.5)	10.2·5.0	序	13(11)·8(5.0)	338·559	照	13(9.7)·12(6.7)	537·338	
祝	17(14)·5(2.7)	483·13.0	徐	1(1.0)·0(0)	19.7·0	症	3(3.0)·12(7.7)	838·500	
縮	7(5.3)·13(11)	1124·1435	恕	0(0)·2(0.5)	0·0.5	省	15(11)·13(12)	1695·2329	
肅	7(4.5)·5(2.8)	67.7·304	鋤	0(0)·0(0)	0·0	硝	4(3.2)·0(0)	37.3·0	
塾	6(3.5)·7(5.5)	40.2·64.2	除	22(16)·20(12)	692·2367	礁	1(0.5)·7(6.0)	0.7·184	
熟	16(13)·13(8.8)	258·347	傷	11(9.0)·34(28)	305·1398	祥	1(0.3)·7(3.7)	0.3·76.3	
出	114(85)·105(76)	19427·15817	償	3(2.3)·8(7.2)	479·1622	称	5(3.5)·31(22)	148·1361	
術	10(7.2)·33(26)	92.7·6860	勝	26(18)·27(22)	3069·7958	章	3(0.8)·41(30)	1.2·1015	
述	2(1.5)·18(13)	38.2·1377	匠	1(0.2)·15(9.7)	0.5·329	笑	10(4.5)·13(9.5)	719·285	
俊	7(6.0)·2(1.2)	147·3.7	升	6(3.3)·2(1.0)	9.3·3.3	粧	0(0)·2(1.2)	0·99.0	
峻	5(3.2)·2(1.3)	12.2·3.0	召	6(5.5)·2(1.5)	283·14.7	紹	1(1.0)·0(0)	2263·0	
春	64(38)·31(23)	877·1968	哨	4(1.5)·2(1.7)	14.8·4.0	肖	1(1.0)·1(0.5)	81.3·0.8	
瞬	4(4.0)·3(2.2)	690·362	商	39(31)·27(20)	5439·613	萑	1(1.0)·0(0)	3.7·0	

Types		Tokens	Types		Tokens	Types		Tokens
K1·K2		K1·K2	K1·K2		K1·K2	K1·K2		K1·K2
蔣	0(0)·0(0)	0·0	織	12(7.5)·16(9.3)	88.8·4272	甚	4(2.8)·3(1.8)	21.0·3.5
蕉	2(0.8)·1(1.0)	1.0·78.7	職	24(20)·49(41)	5264·5530	尽	2(1.2)·7(2.8)	87.2·11.5
衝	6(4.5)·3(3.0)	1291·404	色	45(28)·124(88)	484·2028	腎	3(2.2)·2(1.5)	192·3.0
裳	1(0.2)·1(1.0)	0.2·2.3	触	9(7.7)·6(4.7)	141·841	訊	0(0)·0(0)	0·0
訟	1(1.0)·2(1.5)	8.8·1658	食	44(36)·91(68)	4244·2023	迅	2(1.3)·1(0.8)	46.7·1.7
証	13(11)·26(22)	4622·2243	蝕	0(0)·5(2.5)	0·5.8	陣	14(11)·25(19)	711·654
詔	2(1.8)·1(0.3)	16.2·0.7	辱	0(0)·9(7.2)	0·295	鞞	1(0.8)·1(0.8)	3.3·11.0
詳	5(3.8)·2(1.3)	241·23.8	尻	7(3.3)·7(4.5)	7.2·28.2	箭	0(0)·1(0.8)	0·4.2
象	7(5.0)·21(15)	780·7269	伸	7(4.8)·8(6.2)	46.8·82.3	諷	0(0)·0(0)	0·0
賞	19(12)·23(19)	846·2067	信	29(25)·44(38)	5419·6057	須	1(0.2)·3(2.2)	0.2·41.7
醬	1(1.0)·0(0)	22.3·0	侵	8(6.5)·0(0)	1568·0	酢	4(2.2)·10(5.3)	11.8·26.5
鉦	0(0)·0(0)	0·0	唇	1(0.2)·4(2.8)	0.5·7.8	囟	25(21)·35(22)	568·1563
鍾	1(0.2)·0(0)	0.2·0	娠	0(0)·1(1.0)	0·325	厨	3(2.2)·2(1.2)	21.3·1.7
鐘	3(1.5)·11(5.2)	6.3·81.5	寢	29(19)·12(5.7)	269·106	逗	1(0.5)·0(0)	1.0·0
障	4(3.3)·9(6.0)	1519·1355	審	9(7.8)·17(16)	4399·1126	吹	9(4.3)·6(4.0)	58.2·42.7
鞞	0(0)·3(0.7)	0·1.3	心	71(45)·126(85)	3645·10705	垂	10(4.5)·5(2.7)	43.3·9.5
上	132(92)·134(95)	7920·18072	慎	1(1.0)·2(1.2)	425·30.0	帥	0(0)·3(2.7)	0·39.5
丈	2(1.3)·12(8.5)	12.7·60.3	振	16(10)·14(8.5)	1176·952	推	20(16)·2(2.0)	4969·16.0
丞	1(1.0)·0(0)	15.5·0	新	146(109)·12(11)	12494·1955	水	169(112)·146(108)	5167·2653
乘	22(13)·24(16)	1101·395	晋	1(0.3)·0(0)	0.7·0	炊	4(2.3)·5(2.7)	41.0·24.7
冗	8(4.8)·0(0)	211·0	森	7(3.5)·0(0)	361·0	睡	3(3.0)·5(4.5)	121·32.7
剩	2(1.7)·2(2.0)	4.5·532	榛	0(0)·0(0)	0·0	粹	3(1.0)·8(5.8)	1.7·136
城	29(20)·43(33)	180·407	浸	7(5.7)·0(0)	457·0	翠	4(1.0)·2(0.3)	1.7·0.5
場	15(11)·111(83)	12102·27033	深	35(24)·8(4.2)	954·109	衰	8(5.2)·5(3.7)	225·86.0
壤	0(0)·1(1.0)	0·237	申	9(5.8)·9(5.5)	2133·793	遂	1(1.0)·3(2.2)	138·181
嬢	0(0)·5(1.8)	0·8.7	疹	0(0)·5(3.2)	0·18.7	醉	11(5.7)·7(5.2)	13.2·112
常	52(36)·16(15)	2443·3909	真	91(64)·7(4.8)	1427·5161	錐	1(0.2)·3(1.2)	0.7·2.2
情	35(25)·64(48)	8854·6365	神	90(54)·56(31)	2570·1210	錘	1(0.2)·1(0.7)	0.2·1.3
擾	1(0.5)·1(0.5)	0.5·2.3	秦	0(0)·0(0)	0·0	随	14(11)·3(2.8)	404·164
条	14(8.7)·20(12)	5802·325	紳	1(1.0)·1(1.0)	120·5.2	瑞	8(4.0)·1(0.2)	25.0·0.2
杖	2(0.3)·5(1.3)	0.7·1.7	臣	5(2.7)·28(15)	10.0·568	髓	2(1.0)·10(7.3)	1.7·167
浄	8(5.0)·4(3.8)	236·136	芯	1(0.3)·4(1.5)	0.3·1.8	崇	3(3.0)·1(0.3)	45.8·0.8
状	3(2.3)·63(46)	8218·3472	薪	3(2.3)·0(0)	8.5·0	嵩	0(0)·0(0)	0·0
疊	8(4.2)·5(2.3)	8.8·23.3	親	65(45)·19(15)	2069·3965	数	32(24)·107(83)	3860·9023
穰	0(0)·1(0.8)	0·5.7	診	3(3.0)·18(16)	1275·674	枢	4(2.5)·1(1.0)	10.2·173
蒸	6(4.3)·0(0)	145·0	身	30(20)·80(56)	1655·6811	趨	1(1.0)·1(1.0)	12.0·3.7
讓	4(3.2)·8(6.5)	817·359	辛	11(7.5)·5(2.2)	168·11.3	雛	5(1.8)·4(0.7)	4.5·1.2
釀	3(2.2)·1(1.0)	168·6.3	進	30(27)·44(37)	4619·5768	据	1(0.7)·1(0.2)	1.2·0.2
錠	2(2.0)·2(2.0)	30.3·55.5	針	9(4.5)·21(11)	104·6852	杉	8(6.0)·4(2.2)	103·6.0
囑	3(2.5)·1(1.0)	72.0·81.3	震	8(5.3)·14(12)	1260·2416	梶	0(0)·0(0)	0·0
埴	2(1.3)·0(0)	16.8·0	人	124(91)·240(184)	19519·41265	菅	2(1.5)·1(0.2)	39.2·0.2
飾	1(0.2)·11(7.7)	0.2·168	仁	10(5.5)·5(1.8)	19.7·5.3	頗	0(0)·1(0.2)	0·0.3
拭	0(0)·5(2.7)	0·58.2	刃	4(3.2)·11(6.0)	169·15.7	雀	2(0.3)·13(6.7)	0.3·28.5
植	12(9.0)·15(7.8)	668·1328	塵	6(2.0)·17(9.7)	5.0·28.5	裾	2(1.2)·1(0.2)	5.8·0.3
殖	2(1.0)·8(7.0)	6.2·709	壬	5(1.7)·0(0)	2.8·0	澄	1(0.5)·4(2.5)	0.5·24.7
燭	3(1.2)·3(1.0)	1.8·1.8	尋	2(2.0)·4(2.7)	217·14.8	摺	2(0.7)·7(2.2)	1.2·2.8

	Types		Tokens			Types		Tokens	
	K1·K2	K1·K2	K1·K2	K1·K2		K1·K2	K1·K2		
寸	21(14)·9(6.7)	295·16.8	積	20(13)·17(12)	504·1305	織	3(1.7)·4(2.3)	17.0·43.5	
世	35(22)·54(39)	13050·1198	籍	0(0)·31(23)	0·1556	羨	1(1.0)·0(0)	11.2·0	
瀬	4(2.0)·12(7.7)	29.8·48.8	績	0(0)·9(7.5)	0·3555	腺	1(0.5)·8(5.0)	1.2·28.0	
畝	0(0)·0(0)	0·0	脊	5(3.3)·0(0)	25.7·0	舛	0(0)·0(0)	0·0	
是	5(4.0)·6(4.0)	1056·50.2	責	2(2.0)·11(8.7)	4996·242	船	61(41)·89(50)	1122·986	
凄	5(3.8)·0(0)	15.3·0	赤	65(38)·3(1.8)	2531·63.8	薦	0(0)·3(3.0)	0·1369	
制	19(15)·37(30)	12111·9046	跡	3(2.8)·40(28)	200·1748	詮	3(1.5)·1(1.0)	3.5·6.7	
勢	3(1.8)·60(46)	2786·9096	蹟	0(0)·11(3.5)	0·8.7	賤	1(0.3)·2(0.8)	0.3·1.2	
姓	2(1.7)·11(6.5)	17.3·161	碩	1(0.8)·0(0)	2.8·0	踐	0(0)·1(1.0)	0·328	
征	9(5.2)·10(6.0)	55.7·310	切	39(18)·45(21)	696·1001	選	33(29)·35(30)	17887·5152	
性	28(20)·96(73)	1565·14063	拙	15(8.7)·3(2.0)	76.3·8.7	遷	5(2.5)·5(2.8)	42.3·83.5	
成	40(33)·54(39)	8670·12198	接	25(22)·14(10)	2811·2182	錢	9(4.2)·24(12)	83.8·332	
政	34(30)·60(51)	43888·7888	撰	11(6.5)·1(1.0)	153·3.2	銑	1(1.0)·0(0)	6.7·0	
整	22(15)·6(4.3)	3987·3418	折	21(10)·12(9.2)	458·723	閃	1(1.0)·1(0.3)	6.3·0.5	
星	25(13)·42(29)	126·1577	設	7(7.0)·23(21)	7535·12270	鮮	8(5.8)·2(2.0)	98.2·77.5	
晴	8(3.7)·6(2.5)	39.8·34.2	窃	2(1.3)·0(0)	96.3·0	前	132(99)·84(67)	14376·16764	
棲	2(1.3)·7(3.7)	2.2·12.2	節	26(18)·49(28)	790·1192	善	26(16)·15(10)	172·2665	
栖	0(0)·0(0)	0·0	說	10(7.5)·57(36)	6192·3965	漸	4(4.0)·2(1.2)	14.0·2.3	
正	95(64)·32(25)	4083·6584	雪	56(30)·42(30)	328·411	然	2(0.3)·59(49)	0.3·5604	
清	48(34)·3(3.0)	1373·66.7	絶	31(27)·17(14)	1636·662	全	109(91)·9(8.7)	19969·3312	
牲	0(0)·1(1.0)	0·531	舌	12(6.8)·7(5.7)	31.2·55.0	禪	13(8.2)·5(3.7)	69.2·38.3	
生	110(73)·109(76)	15808·13199	蟬	1(0.2)·5(1.2)	0.2·1.7	繕	0(0)·2(2.0)	0·67.2	
盛	21(12)·21(11)	135·218	仙	12(4.3)·8(4.8)	16.8·33.2	膳	0(0)·10(5.8)	0·15.8	
精	51(39)·11(8.7)	1898·116	先	83(64)·58(43)	9441·2319	糰	0(0)·0(0)	0·0	
聖	41(27)·17(8.8)	471·142	千	62(43)·10(9.3)	1054·4573	噌	0(0)·1(1.0)	0·19.5	
声	21(16)·60(38)	1631·1096	占	8(6.3)·6(3.2)	602·535	塑	2(1.3)·3(1.8)	6.5·10.7	
製	32(28)·39(31)	5386·811	宣	10(8.0)·6(3.2)	2444·9.2	岨	0(0)·0(0)	0·0	
西	37(27)·8(7.3)	1437·564	專	25(22)·11(6.3)	4160·1511	措	3(2.0)·1(0.3)	2781·0.5	
誠	4(2.7)·4(2.5)	39.2·63.8	尖	5(2.0)·0(0)	5.2·0	曾	1(0.3)·0(0)	0.3·0	
誓	6(3.7)·2(1.5)	54.8·102	川	43(29)·25(21)	489·1095	曾	0(0)·0(0)	0·0	
請	12(7.0)·11(8.2)	1593·3966	戰	63(53)·70(59)	10844·9323	楚	3(0.7)·2(1.2)	0.8·6.8	
逝	1(1.0)·2(1.2)	14.8·34.2	扇	8(6.0)·10(3.3)	69.2·5.0	狙	1(1.0)·0(0)	42.2·0	
醒	0(0)·2(1.3)	0·17.3	撰	4(1.3)·5(2.7)	2.8·6.2	疏	1(0.3)·0(0)	0.7·0	
青	68(44)·8(5.2)	1643·13.7	栓	1(0.3)·5(3.7)	1.0·30.3	疎	10(6.0)·3(2.3)	227·194	
静	21(12)·9(6.8)	279·293	梅	1(0.5)·0(0)	0.5·0	礎	2(1.2)·3(2.3)	12.5·724	
齐	5(1.7)·2(1.2)	34.0·139	泉	7(3.8)·14(8.5)	24.2·311	祖	12(8.0)·15(9.5)	786·314	
税	15(14)·35(28)	4134·5641	浅	18(11)·2(1.5)	52.8·5.0	租	3(3.0)·2(0.7)	42.2·1.2	
脆	2(1.3)·0(0)	20.5·0	洗	18(14)·7(3.3)	527·20.2	粗	24(16)·1(0.2)	126·0.2	
隻	3(1.5)·1(1.0)	2.8·43.2	染	13(7.7)·15(9.0)	92.8·2029	素	31(24)·22(18)	1147·1407	
席	11(8.3)·44(37)	189·7008	潜	10(7.7)·3(3.0)	218·67.8	組	25(16)·35(24)	5737·4244	
惜	5(2.8)·4(3.3)	86.7·13.7	煎	4(2.0)·2(0.5)	4.7·0.5	蘇	3(1.8)·2(0.8)	37.3·2.3	
戚	1(0.2)·6(3.8)	0.2·16.0	煽	2(1.0)·0(0)	1.5·0	訴	6(5.5)·25(18)	1862·2567	
斥	2(1.2)·2(1.5)	2.5·45.0	旋	7(5.3)·5(4.0)	166·57.2	阻	4(3.7)·0(0)	621·0	
昔	9(4.7)·6(4.3)	61.2·46.8	穿	2(0.8)·0(0)	1.0·0	遡	4(2.7)·0(0)	8.0·0	
析	1(0.7)·3(3.0)	1.2·1900	箭	1(0.2)·2(0.3)	0.2·0.5	鼠	2(0.3)·4(1.3)	0.3·1.3	
石	84(51)·89(53)	2113·1039	線	18(16)·82(63)	334·4997	僧	21(11)·19(11)	61.0·63.3	

	Types		Tokens			Types		Tokens			Types		Tokens	
	K1·K2	K1·K2	K1·K2	K1·K2		K1·K2	K1·K2	K1·K2	K1·K2		K1·K2	K1·K2	K1·K2	K1·K2
創	17(15)·6(3.3)	2349·35.0	增	40(34)·14(12)	4890·1142	驩	0(0)·0(0)	0·0						
双	20(11)·2(0.8)	1337·1.7	憎	2(1.2)·1(1.0)	66.5·27.8	体	43(37)·118(91)	8266·17173						
叢	2(1.2)·3(0.7)	13.0·0.7	臟	2(1.8)·5(4.7)	427·1043	堆	3(2.2)·0(0)	27.5·0						
倉	6(2.8)·19(13)	305·113	藏	11(8.5)·37(26)	1659·959	対	68(53)·12(11)	26316·5737						
喪	8(5.3)·4(2.7)	1622·16.7	贈	5(4.5)·5(2.8)	466·138	耐	15(10)·1(1.0)	329·66.5						
壮	17(10)·6(4.2)	56.5·32.0	造	29(21)·34(27)	649·5081	岱	0(0)·0(0)	0·0						
奏	8(4.2)·20(14)	171·1157	促	3(2.3)·3(3.0)	1050·57.3	帶	15(8.2)·36(22)	55.3·2695						
爽	3(2.0)·0(0)	14.5·0	側	22(13)·29(24)	949·1619	待	10(7.5)·15(8.8)	509·6534						
宋	1(0.7)·1(0.2)	0.8·0.2	則	0(0)·28(23)	0·2457	忘	4(2.8)·2(1.2)	59.7·4.5						
層	7(4.5)·33(25)	43.3·1538	即	29(20)·1(0.2)	797·0.5	態	3(3.0)·27(22)	2291·7809						
匠	0(0)·0(0)	0·0	息	4(3.0)·21(17)	1504·769	戴	1(1.0)·4(2.5)	4.8·12.7						
惣	1(0.7)·0(0)	2.2·0	捉	0(0)·2(1.2)	0·8.0	替	2(0.3)·14(7.3)	0.7·768						
想	4(4.0)·30(24)	1429·7465	束	5(2.3)·18(11)	42.0·2231	泰	7(4.7)·1(1.0)	16.7·32.2						
搜	2(2.0)·2(1.5)	3595·189	測	10(5.5)·13(9.5)	455·2690	滯	12(9.2)·5(5.0)	832·682						
掃	5(4.0)·3(2.2)	284·349	足	41(29)·65(46)	975·5138	胎	6(5.8)·4(3.8)	192·18.2						
挿	7(4.5)·1(0.5)	124·0.5	速	20(15)·28(24)	1151·2052	腿	0(0)·3(2.2)	0·11.5						
搔	0(0)·3(0.8)	0·1.2	俗	37(19)·21(13)	61.0·259	苔	1(0.2)·4(1.7)	0.2·13.7						
操	11(7.2)·7(5.0)	1125·269	属	8(3.8)·19(15)	15.5·2125	袋	7(2.2)·28(17)	4.2·225						
早	49(32)·5(3.0)	2279·40.0	賊	3(1.2)·11(8.2)	1.8·63.8	貸	18(15)·4(2.5)	646·255						
曹	3(2.3)·10(8.5)	6.7·117	族	6(2.2)·29(22)	5.8·6942	退	42(36)·18(15)	3149·3498						
巢	6(4.2)·8(5.8)	29.5·168	続	19(13)·14(12)	699·6255	逮	2(1.3)·0(0)	3649·0						
槍	4(1.2)·6(1.8)	1.8·3.2	卒	7(6.0)·15(9.3)	1236·873	隊	10(8.3)·24(19)	588·2140						
槽	0(0)·5(3.5)	0·157	袖	2(0.5)·10(5.7)	0.8·30.3	黛	0(0)·0(0)	0·0						
漕	3(1.5)·5(1.7)	23.3·2.8	其	6(1.0)·0(0)	1.0·0	鯛	2(0.7)·5(1.3)	0.8·2.8						
燥	0(0)·2(2.0)	0·195	揃	1(0.2)·1(0.2)	0.2·0.2	代	47(34)·67(50)	12412·12936						
争	9(6.5)·10(8.3)	454·7539	存	13(11)·21(17)	3361·2595	台	23(18)·44(27)	1705·2923						
瘦	3(1.5)·1(0.7)	6.0·0.8	孫	3(2.2)·11(4.7)	44.7·141	大	378(278)·68(59)	29986·9609						
相	52(36)·51(37)	9507·21431	尊	15(9.2)·7(3.5)	1146·16.2	第	5(5.0)·4(4.0)	4334·590						
窓	6(5.3)·17(11)	685·61.3	損	12(9.5)·21(13)	2013·217	醍	1(1.0)·0(0)	5.5·0						
槽	1(0.5)·0(0)	0.8·0	村	31(22)·25(17)	545·936	題	10(8.0)·37(29)	366·27455						
総	53(42)·2(1.0)	10100·2.3	遜	1(1.0)·2(1.7)	8.0·8.8	鷹	3(2.0)·4(1.2)	6.7·2.2						
綜	1(1.0)·1(1.0)	20.2·15.3	他	48(35)·4(3.2)	1937·21.2	滝	5(3.5)·1(0.7)	23.7·0.8						
聡	2(1.3)·0(0)	11.0·0	多	70(50)·9(7.5)	2917·812	瀧	0(0)·0(0)	0·0						
草	40(24)·51(36)	534·386	太	23(18)·11(6.8)	926·52.7	卓	9(6.3)·5(4.8)	201·211						
莊	4(3.3)·5(2.5)	13.8·193	汰	0(0)·2(2.0)	0·73.8	啄	1(1.0)·0(0)	35.2·0						
葬	9(6.8)·23(17)	2205·307	訛	0(0)·0(0)	0·0	宅	6(4.0)·21(17)	181·7277						
蒼	6(2.7)·1(0.3)	7.0·1.0	唾	2(1.3)·3(1.5)	6.8·3.3	托	3(1.3)·2(0.3)	2.5·0.5						
藻	6(2.2)·8(3.7)	14.8·34.5	墮	2(2.0)·0(0)	41.8·0	扱	2(1.3)·2(2.0)	6.2·2399						
装	16(12)·44(34)	1808·1740	妥	3(3.0)·0(0)	873·0	拓	3(2.2)·3(2.3)	19.0·330						
走	10(8.8)·39(31)	851·1226	惰	6(2.5)·1(1.0)	33.7·7.7	沢	8(4.8)·9(4.3)	13.8·38.0						
送	28(21)·31(25)	994·4879	打	33(24)·44(30)	4668·2784	濯	0(0)·1(1.0)	0·144						
遭	2(2.0)·0(0)	193·0	柁	0(0)·0(0)	0·0	琢	1(0.5)·1(0.5)	2.0·0.5						
鎗	0(0)·0(0)	0·0	舵	1(0.2)·1(1.0)	0.2·6.7	託	3(2.3)·16(14)	31.8·1362						
霜	9(4.0)·10(4.3)	9.3·10.5	梢	1(1.0)·0(0)	8.2·0	鐸	0(0)·2(1.8)	0·75.2						
騷	6(5.0)·4(3.8)	623·26.5	陀	1(0.2)·4(2.0)	1.2·4.2	濁	6(3.2)·8(4.7)	20.3·28.8						
像	1(0.2)·42(33)	0.2·2591	駄	8(5.3)·4(3.0)	43.0·133	諾	1(1.0)·8(6.7)	7.7·356						

Types		Tokens	Types		Tokens	Types		Tokens
K1•K2		K1•K2	K1•K2		K1•K2	K1•K2		K1•K2
茸	0(0)•4(1.8)	0•5.8	男	38(26)•28(20)	7404•1217	貯	6(5.7)•1(1.0)	921•196
凧	1(0.2)•0(0)	0.2•0	談	9(7.3)•39(30)	1038•7194	丁	18(9.8)•18(11)	211•305
蛸	1(0.2)•0(0)	0.2•0	値	8(6.0)•20(17)	615•2431	兆	1(1.0)•17(16)	91.8•1151
只	4(1.0)•0(0)	1.3•0	知	33(23)•48(34)	5179•2219	凋	1(1.0)•0(0)	10.2•0
叩	1(0.7)•2(0.3)	0.8•0.5	地	118(81)•157(122)	27351•14758	喋	0(0)•0(0)	0•0
但	0(0)•0(0)	0•0	弛	1(1.0)•0(0)	35.2•0	寵	4(2.2)•1(1.0)	9.7•3.0
達	10(7.3)•28(22)	1390•2970	恥	4(3.5)•5(2.0)	19.8•2.8	帖	1(0.2)•2(1.2)	0.2•20.3
辰	2(1.2)•7(3.2)	13.0•6.7	智	13(4.5)•10(6.3)	8.7•66.8	帳	5(3.2)•14(9.2)	147•277
奪	3(3.0)•7(6.0)	230•143	池	5(2.3)•8(4.0)	6.5•163	庁	2(2.0)•19(17)	169•2238
脱	38(30)•12(6.8)	1700•566	痴	6(3.2)•4(3.7)	103•47.3	弔	12(7.7)•2(1.2)	148•13.7
巽	0(0)•0(0)	0•0	稚	7(4.5)•2(1.8)	52.5•10.8	張	9(3.8)•18(13)	10.7•6423
豎	5(3.2)•0(0)	20.8•0	置	8(4.8)•32(20)	31.7•8665	彫	10(6.0)•3(2.2)	220•21.2
辿	0(0)•0(0)	0•0	致	5(2.3)•10(7.8)	110•2608	徵	9(7.0)•7(4.0)	424•1790
棚	4(2.7)•9(7.0)	34.7•93.8	蜘	0(0)•0(0)	0•0	懲	3(3.0)•0(0)	707•0
谷	8(5.0)•12(8.3)	114•108	遲	16(10)•1(0.2)	160•0.2	挑	2(2.0)•0(*)	1350•0
狸	0(0)•2(0.8)	0•2.8	馳	2(0.3)•1(0.3)	0.5•0.7	暢	2(0.3)•2(1.3)	0.3•4.5
鱒	1(0.2)•4(1.2)	0.2•1.5	築	8(5.3)•9(7.3)	225•1457	朝	54(35)•35(24)	1631•973
樽	4(0.8)•2(1.0)	1.3•2.3	畜	5(3.2)•7(4.7)	83.2•140	潮	19(9.7)•24(18)	190•376
誰	2(0.3)•0(0)	0.5•0	竹	24(14)•22(9.3)	68.5•46.8	牒	0(0)•1(0.8)	0•1.7
丹	10(5.5)•4(2.0)	34.8•22.7	筑	0(0)•0(0)	0•0	町	33(25)•22(17)	1062•495
単	47(33)•4(1.7)	2712•350	蓄	4(2.8)•4(3.3)	352•435	眺	1(1.0)•0(0)	17.8•0
嘆	5(3.3)•9(6.7)	24.2•73.0	逐	6(3.3)•3(2.8)	30.5•26.2	聽	10(7.7)•16(13)	879•466
坦	0(0)•1(1.0)	0•6.5	秩	2(1.2)•0(0)	491•0	脹	0(0)•2(0.3)	0•0.3
担	6(4.7)•5(3.5)	4217•4093	窒	2(2.0)•0(0)	90.5•0	腸	8(5.0)•16(9.8)	43.2•168
探	15(12)•3(0.7)	430•0.7	茶	42(26)•35(19)	243•202	蝶	1(0.3)•5(2.7)	0.8•5.5
旦	3(1.5)•5(2.0)	5.5•8.7	嫡	5(3.3)•1(0.3)	8.5•0.5	調	28(21)•58(44)	14946•6952
歎	0(0)•4(0.8)	0•0.8	着	42(33)•76(51)	2094•4207	諜	2(1.7)•2(1.5)	73.5•11.0
淡	13(9.7)•5(3.3)	87.0•37.2	中	161(117)•136(103)	19586•7023	超	10(8.0)•2(2.0)	300•13.2
湛	0(0)•0(0)	0•0	仲	12(8.3)•3(3.0)	1702•44.5	跳	3(2.7)•2(0.3)	48.2•0.3
炭	18(14)•22(13)	338•310	宙	2(0.7)•1(1.0)	0.7•668	銚	1(1.0)•0(0)	20.3•0
短	40(31)•5(3.7)	2119•101	忠	23(15)•4(1.2)	210•1.2	長	94(63)•100(83)	7784•33040
端	22(15)•42(30)	332•1078	抽	3(3.0)•0(0)	545•0	頂	8(4.7)•11(7.3)	362•247
箒	1(0.8)•1(0.7)	4.2•3.0	昼	16(14)•6(4.8)	597•29.7	鳥	19(9.7)•47(32)	118•370
綻	0(0)•1(1.0)	0•172	柱	12(5.2)•35(22)	10.5•222	勅	13(5.5)•4(1.8)	13.3•5.3
耽	3(2.2)•0(0)	5.8•0	注	16(12)•13(9.8)	4739•1490	抄	0(0)•1(1.0)	0•8.3
胆	5(4.2)•10(5.2)	40.2•125	虫	11(6.2)•36(24)	86.7•335	直	69(53)•39(27)	7644•811
蛋	2(1.2)•1(0.2)	3.0•0.2	衷	1(1.0)•2(2.0)	4.2•16.3	朕	0(0)•0(0)	0•0
誕	2(1.2)•4(2.8)	1181•98.2	註	2(0.7)•4(1.0)	1.3•1.3	沈	20(14)•10(5.3)	550•45.0
鍛	6(5.0)•0(0)	39.5•0	耐	0(0)•1(1.0)	0•49.5	珍	24(15)•2(0.5)	60.2•0.5
団	17(13)•30(25)	5257•6698	鑄	9(5.8)•3(0.7)	69.5•1.0	賃	10(5.0)•11(7.2)	1035•856
壇	1(1.0)•24(18)	65.5•428	駐	17(13)•3(3.0)	1116•136	鎮	11(8.7)•2(1.7)	168•34.7
彈	18(13)•21(16)	707•946	櫓	0(0)•0(0)	0•0	陳	8(5.8)•3(1.3)	566•6.0
断	33(27)•36(30)	1594•8281	瀕	0(0)•0(0)	0•0	津	1(1.0)•4(2.7)	213•13.5
暖	14(9.8)•3(2.2)	177•517	猪	4(2.3)•1(0.2)	8.7•0.2	墜	2(1.3)•2(2.0)	291•160
檀	4(1.3)•4(2.2)	23.5•4.2	苧	2(0.8)•0(0)	1.7•0	椎	3(1.2)•6(3.8)	3.2•26.2
段	8(5.7)•36(33)	2586•3505	著	8(6.0)•22(17)	1766•263	槌	1(0.3)•7(3.3)	0.7•8.2

	Types		Tokens			Types		Tokens	
	K1·K2	K1·K2	K1·K2	K1·K2		K1·K2	K1·K2		
追	41(30)·5(3.3)	3857·107	禎	0(0)·0(0)	0·0	吐	4(3.5)·2(0.3)	45.2·0.3	
鎚	0(0)·3(0.7)	0·1.7	程	2(2.0)·27(20)	4324·2941	堵	0(0)·1(1.0)	0·17.5	
痛	20(15)·20(16)	446·591	締	3(2.3)·4(2.3)	463·170	塗	9(5.2)·2(1.3)	121·8.2	
通	74(58)·46(32)	10725·3534	艇	6(3.5)·8(5.8)	19.8·96.3	妬	1(0.2)·1(1.0)	0.2·22.3	
塚	1(1.0)·9(4.2)	16.7·38.2	訂	1(1.0)·6(3.8)	499·104	屠	3(1.0)·1(0.2)	2.7·0.2	
榎	0(0)·0(0)	0·0	諦	2(1.8)·2(1.2)	7.5·5.2	徒	15(7.0)·22(12)	145·3560	
搦	0(0)·1(0.2)	0·0.2	蹄	1(0.8)·5(2.0)	1.7·3.8	斗	2(0.3)·6(2.8)	0.3·8.5	
槻	0(0)·0(0)	0·0	遞	4(2.5)·1(0.2)	48.0·0.2	杜	3(2.5)·0(0)	27.8·0	
佃	1(0.8)·0(0)	6.0·0	邸	3(2.2)·9(7.7)	59.5·1802	渡	18(15)·17(5.2)	372·466	
潰	1(1.0)·5(1.0)	49.0·1.2	鄭	0(0)·0(0)	0·0	登	22(16)·6(3.7)	4383·56.5	
柘	1(0.7)·0(0)	0.8·0	釘	0(0)·0(0)	0·0	菟	0(0)·1(0.2)	0·0.2	
辻	5(2.2)·0(0)	6.2·0	鼎	2(1.0)·0(0)	3.0·0	賭	3(2.0)·0(0)	13.0·0	
蔦	1(0.2)·0(0)	0.2·0	泥	25(16)·8(4.0)	197·39.8	途	10(8.7)·18(13)	2566·769	
綴	3(1.3)·4(1.3)	3.7·4.7	摘	8(5.0)·3(1.5)	677·5001	都	31(27)·27(18)	5458·1419	
鏝	0(0)·0(0)	0·0	擢	0(0)·1(1.0)	0·6.8	鍍	1(0.2)·1(0.2)	0.2·0.2	
椿	3(0.5)·5(1.0)	1.0·1.2	敵	25(19)·23(16)	449·343	砥	1(0.8)·3(1.2)	6.0·1.3	
潰	3(1.2)·0(0)	1.7·0	滴	2(0.5)·6(4.3)	0.5·127	砺	0(0)·0(0)	0·0	
坪	2(0.8)·1(0.7)	1.2·2.2	的	5(3.2)·28(25)	95.3·4456	努	1(1.0)·0(0)	2776·0	
壺	4(0.7)·8(1.5)	0.7·3.0	笛	1(0.3)·18(12)	0.5·81.7	度	6(4.7)·93(78)	86.2·27622	
孀	1(0.8)·1(0.2)	1.7·0.2	適	27(24)·5(4.5)	2247·97.2	土	65(47)·44(32)	4442·2037	
紬	1(0.5)·0(0)	0.7·0	鏑	1(0.2)·0(0)	0.2·0	奴	2(1.3)·4(1.8)	76.3·4.5	
爪	5(2.0)·3(1.3)	3.0·11.3	溺	2(2.0)·2(1.3)	8.7·2.0	怒	6(4.0)·3(2.2)	36.0·40.2	
吊	3(1.0)·3(1.0)	2.0·1.0	哲	4(3.8)·6(4.0)	355·50.5	倒	11(7.8)·14(9.7)	949·711	
釣	11(5.5)·4(0.8)	50.7·0.8	徹	3(2.2)·4(4.0)	1042·38.5	党	27(23)·38(32)	4727·16622	
鶴	3(0.8)·8(4.2)	1.8·21.7	撤	6(6.0)·0(0)	2502·0	冬	26(20)·18(14)	808·255	
亭	2(1.3)·4(2.5)	28.0·147	輒	0(0)·1(0.2)	0·0.2	凍	11(5.7)·3(2.3)	841·155	
低	35(26)·5(3.8)	3154·771	迭	0(0)·1(1.0)	0·181	刀	7(4.3)·35(22)	20.0·109	
停	12(11)·4(2.5)	2385·318	鉄	64(45)·19(13)	1739·391	唐	34(14)·4(1.7)	62.8·3.2	
偵	1(1.0)·3(3.0)	95.0·82.5	典	10(6.2)·33(24)	158·1152	塔	2(1.5)·12(8.0)	3.5·56.8	
剃	2(1.3)·2(0.5)	3.0·2.0	填	1(0.3)·3(2.7)	0.5·17.2	塘	0(0)·1(0.3)	0·0.3	
貞	8(3.8)·3(1.7)	8.3·5.5	天	116(77)·46(29)	2353·312	套	0(0)·2(1.8)	0·12.0	
呈	3(0.7)·6(4.5)	0.8·155	展	5(5.0)·13(13)	4103·2734	宕	0(0)·0(0)	0·0	
堤	2(1.2)·7(3.7)	129·12.2	店	21(14)·40(29)	1790·3012	島	16(9.3)·20(19)	322·712	
定	67(52)·64(52)	4819·33973	添	5(4.2)·5(2.3)	145·24.0	嶋	1(0.2)·0(0)	0.2·0	
帝	15(11)·12(6.5)	351·153	纏	2(0.7)·1(0.5)	1.2·0.7	悼	1(0.2)·2(2.0)	0.2·374	
底	15(11)·29(23)	218·1578	甜	1(0.3)·0(0)	0.5·0	投	36(31)·18(15)	11563·1178	
庭	13(9.3)·20(13)	142·2250	貼	2(0.7)·0(0)	1.0·0	搭	2(2.0)·0(0)	376·0	
廷	3(2.2)·12(9.8)	7.5·896	転	57(45)·28(21)	3966·4634	東	40(30)·15(11)	1980·987	
弟	4(3.7)·16(13)	227·629	顛	3(1.3)·0(0)	4.5·0	桃	7(5.2)·7(4.2)	28.0·11.5	
悌	0(0)·1(0.2)	0·0.2	点	29(21)·74(57)	1700·11214	梲	0(0)·0(0)	0·0	
抵	3(3.0)·3(2.2)	1132·27.0	伝	33(25)·28(18)	1777·1027	棟	4(1.7)·5(4.5)	8.0·205	
挺	1(1.0)·2(1.0)	9.7·14.7	殿	9(5.5)·31(19)	334·251	盜	14(12)·13(9.0)	522·555	
提	15(13)·3(2.3)	12612·1343	澱	1(0.5)·1(0.2)	1.3·0.2	淘	1(1.0)·0(0)	70.5·0	
梯	2(1.0)·2(0.5)	2.7·0.7	田	30(18)·63(46)	363·1583	湯	31(14)·28(16)	79.7·228	
汀	0(0)·1(0.2)	0·0.2	電	52(45)·47(37)	10798·1422	涛	1(0.2)·4(1.7)	0.2·3.5	
碇	2(0.3)·0(0)	0.3·0	兔	2(0.5)·7(3.7)	0.5·12.8	灯	9(6.0)·25(13)	155·163	

Types		Tokens	Types		Tokens	Types		Tokens
K1·K2		K1·K2	K1·K2		K1·K2	K1·K2		K1·K2
燈	5(2.3)·12(3.8)	7.5·8.7	禿	3(1.2)·2(0.5)	2.2·1.0	二	109(95)·17(17)	27865·6596
當	69(51)·32(27)	16207·7663	篤	3(2.5)·2(2.0)	9.7·20.0	尼	2(1.8)·2(0.3)	15.8·3.3
痘	0(0)·3(1.5)	0·13.8	毒	25(15)·19(13)	341·374	弍	0(0)·1(0.3)	0·0.3
禱	0(0)·3(2.0)	0·8.5	獨	45(32)·11(6.7)	3911·990	迹	0(0)·0(0)	0·0
等	14(8.5)·34(24)	110·733	読	14(12)·41(28)	1177·576	匂	0(0)·0(0)	0·0
答	5(5.0)·17(12)	1319·1882	柄	0(0)·0(0)	0·0	賑	0(0)·0(0)	0·0
筒	5(3.7)·11(7.7)	30.7·216	椽	1(0.2)·0(0)	0.2·0	肉	26(18)·37(26)	583·866
糖	8(6.0)·10(7.7)	42.2·333	凸	4(2.5)·1(1.0)	9.3·28.5	虹	2(1.7)·1(0.2)	7.5·0.2
統	14(13)·11(7.7)	4303·1757	突	17(15)·14(7.8)	2045·972	廿	0(0)·0(0)	0·0
到	4(4.0)·3(2.8)	1149·271	椴	0(0)·0(0)	0·0	日	100(74)·145(112)	7423·22313
董	0(0)·1(1.0)	0·9.7	届	1(0.8)·0(0)	2.8·0	乳	31(20)·15(10)	258·401
蕩	2(0.7)·4(1.5)	0.7·7.7	鳶	4(1.5)·1(0.2)	2.0·0.2	入	95(70)·72(46)	8446·15900
藤	8(4.2)·2(1.2)	49.8·77.0	苦	1(0.2)·0(0)	0.2·0	如	9(7.2)·6(4.8)	49.5·148
討	6(4.7)·9(5.8)	773·6156	寅	0(0)·4(0.8)	0·1.3	尿	10(6.3)·11(9.2)	49.5·49.5
膳	2(1.8)·0(0)	12.5·0	酉	0(0)·2(0.8)	0·1.2	菲	0(0)·0(0)	0·0
豆	12(6.5)·13(9.0)	180·224	瀟	0(0)·0(0)	0·0	任	11(9.5)·40(38)	1719·11893
踏	8(4.7)·5(3.7)	199·86.3	噸	0(0)·0(0)	0·0	妊	2(2.0)·3(2.8)	423·189
逃	5(3.8)·1(1.0)	360·43.8	屯	2(0.3)·1(1.0)	0.5·98.3	忍	9(6.3)·6(3.5)	107·17.2
透	8(6.5)·3(1.5)	508·375	惇	0(0)·0(0)	0·0	認	9(7.7)·16(14)	4085·6628
鐙	0(0)·0(0)	0·0	敦	1(0.3)·0(0)	0.3·0	濡	3(1.3)·0(0)	4.0·0
陶	14(9.8)·6(4.2)	187·17.8	沌	0(0)·1(1.0)	0·27.8	襦	0(0)·1(0.2)	0·0.2
頭	33(21)·100(63)	1119·3583	豚	6(4.7)·5(2.5)	113·20.0	衤	0(0)·0(0)	0·0
騰	3(2.2)·7(6.5)	6.2·517	遁	3(1.3)·1(0.7)	3.3·1.5	寧	1(0.2)·2(2.0)	0.3·40.0
闕	12(9.3)·23(18)	595·1624	頓	9(3.5)·2(1.0)	18.0·2.5	葱	0(0)·3(0.5)	0·0.5
働	1(0.7)·7(5.0)	1.0·1281	吞	2(0.8)·9(3.3)	1.5·6.5	猫	8(2.8)·13(7.8)	7.0·65.0
動	26(23)·63(52)	3577·16481	曇	1(0.8)·0(0.0)	5.5·0	熱	40(31)·40(28)	1134·1313
同	142(125)·14(12)	20455·4569	鈍	13(9.3)·2(0.7)	134·2.3	年	102(75)·118(101)	20085·44163
堂	4(1.3)·23(16)	2.7·619	奈	3(1.3)·0(0)	7.2·0	念	7(5.5)·33(28)	596·6999
導	11(7.2)·12(11)	3461·4108	那	0(0)·2(1.2)	0·5.2	捻	2(1.5)·0(0)	17.8·0
懂	0(0)·0(0)	0·0	內	144(100)·88(80)	13245·16392	撚	1(1.0)·0(0)	9.2·0
撞	3(1.2)·0(0)	1.5·0	乍	0(0)·0(0)	0·0	燃	4(3.2)·6(5.5)	764·627
洞	5(3.8)·5(4.0)	68.3·240	凧	0(0)·1(0.2)	0·0.2	粘	7(6.7)·0(0)	125·0
瞳	1(1.0)·1(0.2)	11.2·0.2	薙	1(0.3)·1(1.0)	0.3·6.3	乃	2(0.3)·0(0)	0.7·0
童	14(9.2)·14(8.2)	269·886	謎	2(0.3)·1(0.2)	0.3·0.2	迺	0(0)·0(0)	0·0
胴	11(5.7)·2(0.5)	58.7·0.8	灘	1(0.3)·0(0)	0.5·0	之	0(0)·0(0)	0·0
萄	0(0)·1(1.0)	0·7.3	捺	1(0.8)·1(0.5)	1.8·3.0	埜	0(0)·0(0)	0·0
道	52(40)·157(114)	2734·7782	鍋	4(1.7)·7(4.2)	3.0·12.5	囊	1(0.2)·10(3.0)	1.0·5.2
銅	17(12)·9(4.0)	186·19.7	檜	0(0)·1(0.2)	0·0.5	惱	2(0.5)·2(2.0)	0.5·181
峠	0(0)·0(0)	0·0	馴	3(1.2)·2(0.5)	3.2·0.5	濃	15(9.7)·1(0.2)	548·0.2
鴉	0(0)·0(0)	0·0	繩	3(1.5)·13(5.0)	58.8·16.8	納	20(16)·30(21)	1841·490
匿	1(1.0)·3(3.0)	147·59.8	啜	0(0)·0(0)	0·0	能	12(8.7)·30(24)	1885·4709
得	15(10)·26(21)	2042·5579	南	39(33)·12(11)	2009·166	腦	15(11)·10(7.7)	772·2577
德	16(7.8)·54(31)	23.0·229	楠	0(0)·0(0)	0·0	膿	3(0.5)·1(0.7)	0.8·2.3
洩	1(0.2)·1(1.0)	0.2·9.7	軟	17(12)·2(2.0)	243·142	農	46(38)·19(14)	6540·246
特	75(65)·2(1.5)	7249·126	難	36(30)·29(23)	2726·2819	視	0(0)·0(0)	0·0
督	2(2.0)·5(4.5)	20.7·6493	汝	0(0)·0(0)	0·0	蚤	1(0.2)·0(0)	0.2·0

Types		Tokens	Types		Tokens	Types		Tokens
K1·K2		K1·K2	K1·K2		K1·K2	K1·K2		K1·K2
巴	0(0)·1(0.2)	0·0.3	泊	3(2.2)·12(9.2)	18.3·595	帆	9(4.5)·4(2.5)	34.7·5.0
把	3(2.0)·2(0.5)	516·0.5	白	131(90)·39(26)	2032·768	搬	4(3.2)·2(1.5)	216·108
播	1(1.0)·2(1.5)	2.5·14.2	箔	0(0)·4(1.8)	0·9.5	斑	7(3.3)·14(4.3)	15.5·20.2
霸	5(4.8)·3(2.2)	150·501	粕	1(0.3)·2(1.0)	1.0·1.0	板	27(18)·54(35)	101·1447
杷	0(0)·1(0.7)	0·0.8	舶	3(2.0)·1(1.0)	10.5·222	汜	1(1.0)·0(0)	19.0·0
波	24(16)·39(28)	812·914	薄	49(31)·12(8.0)	182·128	汎	4(2.2)·1(1.0)	45.8·2.3
派	9(7.0)·30(26)	3395·2054	迫	5(4.3)·12(11)	318·771	版	11(7.7)·30(21)	224·1593
琶	0(0)·1(1.0)	0·33.2	曝	4(1.3)·1(1.0)	3.5·15.8	犯	6(5.8)·16(12)	2688·439
破	31(21)·17(15)	2125·1007	漠	1(1.0)·6(3.7)	38.8·221	班	5(2.8)·3(2.8)	108·52.3
婆	0(0)·8(4.5)	0·20.0	爆	17(15)·13(9.8)	1780·1682	畔	1(0.2)·4(2.3)	0.2·44.8
罵	3(2.5)·4(1.8)	20.0·2.2	縛	0(0)·6(4.2)	0·75.7	繁	10(7.5)·3(1.3)	577·26.7
芭	1(1.0)·0(0)	78.7·0	莫	2(1.5)·2(0.3)	9.0·0.3	般	1(0.8)·9(8.0)	2.3·2996
馬	51(30)·74(45)	290·1165	駁	0(0)·3(1.5)	0·2.8	藩	13(8.3)·10(4.7)	63.3·11.3
俳	16(12)·1(0.7)	1114·4.8	麦	9(7.5)·10(5.3)	68.2·118	販	6(4.0)·16(13)	4477·509
麿	49(36)·9(7.8)	3328·1032	函	1(0.2)·1(1.0)	0.2·18.7	範	3(2.0)·6(5.2)	1300·206
拌	18(13)·9(4.5)	138·312	箱	8(3.5)·26(15)	9.5·116	采	0(0)·0(0)	0·0
排	18(16)·0(0)	1640·0	裕	0(0)·0(0)	0·0	煩	3(2.7)·0(0)	13.7·0
敗	16(12)·16(14)	1285·3109	箸	1(0.3)·5(1.2)	0.5·2.5	煩	2(2.0)·0(0)	13.3·0
杯	2(0.7)·18(13)	1.0·245	肇	1(0.3)·0(0)	0.5·0	飯	11(6.0)·22(15)	26.3·113
盃	1(0.3)·3(0.8)	0.3·1.0	筈	0(0)·1(0.3)	0·0.3	挽	3(1.8)·1(0.7)	12.3·3.7
牌	0(0)·5(2.7)	0·11.3	櫛	0(0)·0(0)	0·0	晚	25(17)·14(11)	289·234
背	28(20)·9(5.3)	3623·17.0	幡	0(0)·2(2.0)	0·40.8	番	27(21)·45(31)	3361·3023
肺	9(6.3)·4(2.5)	275·33.2	肌	5(3.3)·16(11)	37.7·76.0	盤	7(4.2)·33(25)	39.8·2591
輩	1(1.0)·11(7.3)	38.3·769	畑	5(3.5)·12(8.5)	26.7·121	磐	2(1.0)·2(1.2)	5.5·13.0
配	36(32)·32(25)	4949·4175	畠	0(0)·2(0.3)	0·0.3	蕃	2(0.5)·2(0.8)	1.0·2.8
倍	9(7.3)·4(3.3)	347·59.7	八	66(50)·15(13)	10923·3758	蛮	8(4.2)·2(2.0)	23.3·16.8
培	2(2.0)·2(1.3)	82.5·391	鉢	3(1.5)·7(4.7)	6.8·20.8	匪	1(0.5)·2(0.5)	1.2·0.5
媒	5(4.0)·4(3.7)	144·81.3	澆	0(0)·0(0)	0·0	卑	9(5.2)·2(0.5)	24.2·0.5
梅	17(11)·20(9.8)	160·41.2	癸	86(75)·58(48)	31262·14243	否	4(4.0)·17(16)	2191·2351
煤	0(0)·0(0)	0·0	醜	1(0.3)·0(0)	0.7·0	妃	0(0)·4(2.3)	0·24.3
煤	4(1.7)·0(0)	4.5·0	髮	4(2.5)·30(22)	51.0·267	庇	1(0.7)·0(0)	3.0·0
猥	0(0)·1(1.0)	0·7.3	伐	3(1.5)·13(9.0)	167·66.0	彼	8(6.3)·2(0.3)	1501·0.5
買	11(6.5)·6(5.0)	705·709	罰	4(2.5)·12(8.7)	556·479	悲	22(18)·2(2.0)	839·15.7
壳	28(16)·36(25)	2015·7544	拔	14(8.3)·13(7.3)	262·572	扉	0(0)·4(2.5)	0·20.7
賠	1(1.0)·0(0)	354·0	筏	1(0.2)·1(0.7)	0.2·1.7	批	6(4.7)·0(0)	5777·0
陪	4(1.8)·0(0)	69.8·0	閥	0(0)·7(5.8)	0·1034	披	3(2.0)·2(0.5)	486·0.7
這	0(0)·3(0.5)	0·0.8	鳩	3(1.8)·4(1.8)	8.2·5.5	斐	0(0)·1(1.0)	0·21.7
蠅	1(0.2)·0(0)	0.2·0	嘶	2(1.2)·3(1.3)	21.2·2.3	比	11(8.8)·8(4.3)	3277·617
秤	1(0.2)·2(1.2)	0.3·4.2	塙	0(0)·0(0)	0·0	泌	0(0)·1(1.0)	0·52.8
矧	0(0)·1(0.3)	0·0.5	蛤	0(0)·0(0)	0·0	疲	2(2.0)·0(0)	251·0
菽	1(0.8)·1(0.2)	2.3·0.2	隼	1(1.0)·0(0)	4.3·0	皮	15(10)·39(19)	419·289
伯	5(5.0)·1(1.0)	88.5·23.0	伴	5(3.5)·3(2.5)	118·50.8	碑	4(2.3)·9(5.8)	22.5·54.8
剥	6(4.0)·1(0.3)	14.2·0.3	判	13(12)·13(11)	9329·8453	秘	31(22)·6(5.7)	1402·202
博	16(12)·6(3.2)	463·127	半	74(50)·18(15)	4519·4806	緋	2(1.0)·0(0)	2.5·0
拍	4(4.0)·6(3.8)	713·42.3	反	62(48)·10(7.3)	12844·2895	罷	2(1.3)·0(0)	51.2·0
柏	2(1.2)·2(1.0)	2.5·2.5	叛	5(1.7)·1(0.7)	2.7·1.5	肥	11(7.3)·14(10)	376·47.8

Types		Tokens	Types		Tokens	Types		Tokens
K1·K2		K1·K2	K1·K2		K1·K2	K1·K2		K1·K2
被	12(9.5)·4(1.7)	8820·9.8	豹	1(1.0)·2(1.2)	9.2·3.8	附	5(2.7)·3(1.0)	6.0·2.0
誹	0(0)·0(0)	0·0	廟	1(1.0)·7(3.3)	6.8·10.0	侮	3(2.2)·1(1.0)	66.5·4.2
費	3(2.8)·36(31)	1679·4379	描	5(4.3)·7(5.0)	188·47.2	撫	1(0.5)·6(3.2)	1.0·6.2
避	4(4.0)·6(5.7)	848·646	病	51(37)·40(29)	7650·656	武	32(22)·6(3.8)	2480·11.0
非	28(21)·5(3.3)	1425·424	秒	3(2.8)·4(2.8)	94.3·54.5	舞	16(11)·24(15)	2637·147
飛	26(17)·15(12)	878·228	苗	4(3.3)·6(4.2)	52.7·73.7	葡	1(1.0)·0(0)	7.3·0
樋	2(1.3)·4(1.3)	20.7·2.0	錨	1(0.3)·1(0.3)	1.0·0.7	蕪	0(0)·1(0.2)	0·0.2
簸	1(0.2)·0(0)	0.2·0	鋌	0(0)·1(0.2)	0·0.2	部	29(25)·81(71)	13346·20361
備	7(4.3)·18(16)	226·8163	蒜	0(0)·2(0.3)	0·0.7	封	11(8.2)·16(9.7)	432·471
尾	12(6.7)·22(13)	76.2·143	蛭	1(0.5)·0(0)	3.7·0	楓	0(0)·0(0)	0·0
微	29(20)·6(4.3)	382·38.5	鰭	0(0)·1(0.2)	0·0.2	風	84(59)·120(82)	2356·1562
枇	1(0.7)·0(0)	0.8·0	品	18(15)·52(45)	888·11964	葺	1(0.3)·6(2.7)	0.5·3.5
毘	0(0)·0(0)	0·0	彬	0(0)·0(0)	0·0	蒨	0(0)·1(0.5)	0·1.8
琵琶	1(1.0)·0(0)	33.2·0	斌	0(0)·0(0)	0·0	伏	9(5.7)·13(9.2)	52.8·162
眉	8(3.2)·7(3.7)	14.5·11.3	浜	8(5.3)·8(5.2)	117·124	副	19(15)·3(2.2)	368·104
美	51(36)·21(12)	1279·87.5	瀨	1(1.0)·0(0)	6.8·0	復	29(23)·10(7.5)	4089·4082
鼻	30(19)·7(4.0)	111·20.7	貧	20(15)·4(3.3)	658·45.3	幅	2(1.8)·24(17)	5.7·904
柢	0(0)·0(0)	0·0	賓	1(1.0)·8(6.0)	11.0·120	服	12(12)·41(30)	581·1499
稗	1(0.2)·0(0)	0.2·0	頻	5(4.2)·00*	184·0	福	17(12)·18(11)	2220·279
匹	1(1.0)·3(2.3)	145·94.3	敏	4(3.8)·7(4.8)	34.8·20.5	腹	21(14)·28(18)	216·281
疋	1(0.8)·0(0)	1.5·0	瓶	2(1.2)·16(9.5)	6.5·44.7	複	15(11)·2(2.0)	1615·221
髭	2(0.5)·2(1.0)	1.0·1.5	不	123(98)·0(0)	15757·0	覆	8(3.3)·6(3.0)	32.7·109
彥	1(0.5)·2(1.7)	1.0·76.0	付	29(21)·51(31)	1726·2703	淵	1(1.0)·1(1.0)	2.3·8.0
膝	5(1.2)·3(0.8)	1.3·1.0	埠	1(1.0)·0(0)	13.0·0	弗	0(0)·0(0)	0·0
菱	1(0.2)·1(0.5)	0.2·0.8	夫	9(6.0)·47(28)	2209·1096	扌	9(6.0)·11(3.8)	135·104
肘	3(0.5)·2(0.8)	0.7·1.2	婦	6(5.3)·19(13)	487·2369	沸	3(2.5)·1(1.0)	103·6.8
粥	0(0)·2(0.3)	0·3.8	富	13(9.0)·4(3.7)	90.5·142	佻	58(36)·34(19)	579·135
必	19(16)·1(0.3)	6590·0.7	富	0(0)·0(0)	0·0	物	55(39)·180(122)	3970·8329
畢	1(0.7)·0(0)	0.8·0	布	20(12)·35(23)	433·1087	鮒	0(0)·1(0.2)	0·0.2
筆	32(20)·52(32)	616·766	府	20(15)·20(12)	448·16968	分	96(71)·114(88)	9666·24089
逼	2(1.3)·0(0)	7.3·0	怖	0(0)·3(2.2)	0·387	吻	1(0.5)·2(1.2)	0.5·4.7
桧	4(1.7)·1(0.2)	6.3·0.2	扶	4(3.5)·1(0.2)	84.5·0.2	噴	11(8.3)·1(0.7)	319·1.2
姬	5(1.8)·12(5.7)	4.7·20.2	敷	11(9.0)·11(5.3)	492·99.5	墳	2(2.0)·3(2.8)	21.5·165
媛	0(0)·1(0.8)	0·2.5	斧	1(0.2)·3(1.5)	0.2·4.7	憤	5(4.8)·7(4.2)	65.3·12.0
紐	1(0.8)·2(0.7)	2.0·2.0	普	8(7.2)·0(0)	1892·0	扮	1(1.0)·0(0)	6.2·0
百	50(41)·10(9.8)	2136·6086	浮	32(21)·0(0)	1163·0	焚	3(1.5)·0(0)	4.2·0
謬	1(0.2)·1(0.7)	0.2·1.5	父	14(13)·23(16)	1685·607	奮	6(5.8)·4(3.0)	175·303
俵	0(0)·6(3.8)	0·347	符	4(3.7)·7(4.0)	35.8·168	粉	16(11)·21(15)	134·139
彪	0(0)·0(0)	0·0	腐	10(7.2)·5(3.5)	803·174	糞	4(1.8)·8(2.7)	6.3·4.3
標	16(12)·11(7.3)	951·3508	膚	0(0)·3(1.7)	0·222	紛	4(3.7)·1(1.0)	1642·50.7
氷	33(22)·17(12)	165·104	芙	1(1.0)·0(0)	13.3·0	券	0(0)·0(0)	0·0
漂	6(4.3)·0(0)	195·0	譜	4(1.7)·17(11)	22.7·202	文	92(69)·131(89)	8940·3062
瓢	1(0.7)·0(0)	3.0·0	負	6(5.7)·8(6.2)	4458·1480	聞	4(1.0)·24(15)	3.2·2509
票	3(2.5)·14(12)	45.3·3839	賦	6(2.3)·7(4.0)	7.7·12.8	丙	2(1.2)·0(0)	2.2·0
表	44(30)·32(19)	9457·20876	赴	1(1.0)·0(0)	144·0	併	20(16)·1(1.0)	694·1326
評	15(11)·27(21)	4571·973	阜	0(0)·0(0)	0·0	兵	31(20)·65(44)	1933·1178

Types		Tokens	Types		Tokens	Types		Tokens
K1·K2		K1·K2	K1·K2		K1·K2	K1·K2		K1·K2
摒	0(0)·5(3.3)	0·10.7	暮	6(2.5)·8(5.3)	4.3·38.2	忙	2(1.2)·2(2.0)	1.3·49.0
幣	2(0.5)·4(3.5)	0.5·141	母	37(24)·25(21)	2515·1091	房	1(0.2)·27(19)	0.2·1152
平	81(56)·25(18)	7347·1653	簿	2(2.0)·4(3.8)	103·683	暴	28(22)·6(4.7)	2145·85.7
弊	7(3.7)·9(6.3)	225·66.5	菩	2(2.0)·0(0)	15.5·0	望	8(5.5)·34(28)	44.2·4536
柄	5(1.5)·34(24)	4.2·1212	傲	1(0.5)·1(1.0)	0.5·40.7	某	8(4.0)·1(0.5)	8.2·0.8
並	14(8.5)·6(2.0)	756·2.2	俸	2(1.5)·4(2.7)	8.8·341	棒	11(5.8)·17(12)	30.2·159
蔽	0(0)·3(1.7)	0·19.8	包	14(10)·8(4.0)	642·102	冒	3(3.0)·1(1.0)	633·3.8
閉	23(18)·6(4.3)	1301·107	呆	2(1.5)·2(1.8)	6.7·79.7	紡	4(3.0)·3(2.0)	70.3·10.3
陸	1(1.0)·0(0)	224·0	報	11(10)·51(41)	7970·9979	肪	0(0)·1(1.0)	0·132
米	46(34)·50(34)	3399·1905	奉	18(11)·2(1.3)	234·29.5	膨	4(2.3)·1(0.2)	208·0.2
頁	1(0.5)·0(0)	1.0·0	宝	26(14)·22(15)	290·176	謀	6(5.2)·14(9.3)	69.7·371
僻	2(1.0)·0(0)	6.8·0	峰	2(0.3)·12(7.5)	0.5·51.7	貌	0(0)·9(6.7)	0·74.2
壁	8(6.0)·33(25)	178·435	峯	0(0)·0(0)	0·0	貿	1(1.0)·0(0)	2418·0
癖	1(0.3)·14(9.8)	0.3·89.8	崩	3(3.0)·4(1.5)	1555·63.8	銚	0(0)·6(2.8)	0·7.3
碧	6(2.7)·4(1.7)	5.5·5.5	庖	1(0.3)·0(0)	0.5·0	防	39(31)·11(9.2)	4368·1999
別	63(44)·46(37)	908·5398	抱	5(3.3)·3(2.0)	173·50.2	吠	0(0)·1(0.2)	0·0.3
瞥	1(0.3)·1(0.8)	0.3·2.3	捧	1(0.2)·0(0)	0.2·0	頰	4(0.8)·3(1.0)	1.2·1.5
蔑	2(2.0)·2(2.0)	22.3·19.2	放	40(32)·10(9.2)	5226·3161	北	31(27)·13(12)	1412·1214
筓	1(0.2)·0(0)	0.2·0	方	26(18)·100(73)	13902·17897	僕	2(0.8)·7(3.8)	1.3·18.5
偏	14(11)·10(2.5)	326·3.3	朋	2(1.0)·1(0.8)	6.2·2.3	卜	1(0.3)·0(0)	0.3·0
変	44(36)·25(19)	6168·1283	法	75(52)·129(95)	8580·10323	墨	17(9.7)·17(7.7)	38.7·17.7
片	38(28)·26(19)	615·281	泡	3(2.8)·5(4.0)	15.8·77.2	撲	2(1.8)·2(2.0)	72.7·527
篇	0(0)·11(5.0)	0·9.3	烹	1(0.2)·1(0.8)	0.2·4.0	朴	2(0.3)·4(2.2)	0.3·16.0
編	17(12)·26(21)	2315·1607	砲	22(13)·16(13)	296·461	牧	16(13)·3(2.8)	301·73.2
辺	5(2.8)·35(25)	47.2·3014	縫	4(2.5)·3(2.0)	53.8·18.7	睦	1(0.3)·2(1.7)	0.3·8.7
返	19(17)·10(4.5)	3545·22.3	胞	2(1.7)·6(4.5)	11.5·708	穆	0(0)·0(0)	0·0
遍	5(3.3)·3(2.8)	29.8·20.0	芳	9(4.0)·2(0.8)	15.7·0.8	釦	0(0)·0(0)	0·0
便	13(12)·27(20)	475·783	萌	3(2.0)·1(0.5)	9.2·0.5	勃	3(2.7)·0(0)	26.3·0
勉	3(2.7)·2(1.5)	1521·47.8	蓬	4(1.8)·0(0)	6.2·0	没	12(7.5)·13(10)	267·506
婉	0(0)·1(1.0)	0·24.5	蜂	4(2.2)·6(2.3)	19.2·10.8	殆	0(0)·1(0.2)	0·0.2
弁	16(14)·26(18)	1424·1069	褒	4(3.2)·1(0.2)	24.5·0.2	堀	5(3.8)·4(2.3)	21.5·16.3
鞭	4(1.3)·4(2.3)	1.8·11.2	訪	13(12)·4(4.0)	3933·253	幌	0(0)·0(0)	0·0
保	31(28)·22(16)	10661·4062	豊	15(10)·1(0.2)	167·0.2	奔	6(3.5)·3(2.2)	106·11.8
舗	3(2.5)·5(3.3)	76.0·738	邦	12(10)·9(5.3)	551·784	本	178(135)·101(66)	15815·5451
舗	0(0)·0(0)	0·0	鋒	0(0)·4(2.5)	0·37.3	翻	5(4.7)·0(0)	479·0
圃	1(0.7)·1(0.7)	0.7·1.0	飽	2(2.0)·0(0)	43.3·0	凡	12(8.7)·3(1.8)	89.0·25.8
捕	15(11)·5(3.0)	965·3669	鳳	3(1.0)·2(1.3)	1.5·5.3	盆	7(4.3)·7(3.7)	50.8·12.2
歩	13(9.7)·31(23)	460·1781	鵬	0(0)·1(1.0)	0·21.3	摩	5(3.2)·3(2.3)	304·20.3
甫	0(0)·0(0)	0·0	乏	0(0)·4(3.8)	0·109	磨	3(0.7)·8(5.5)	0.7·40.5
補	30(25)·7(3.8)	3040·2542	亡	15(9.8)·10(7.2)	484·2388	魔	14(12)·13(6.0)	173·207
輔	2(0.7)·1(1.0)	0.7·15.5	傍	10(7.7)·2(1.7)	249·5.3	麻	12(9.0)·8(4.5)	451·56.8
穂	3(2.3)·9(6.8)	11.2·58.2	剖	1(0.3)·1(1.0)	5.7·94.8	埋	9(6.3)·1(0.3)	262·0.8
募	3(2.3)·7(3.8)	1232·1039	坊	5(2.5)·9(5.3)	22.0·16.3	妹	5(1.7)·7(5.8)	2.8·241
墓	14(12)·3(2.2)	302·34.0	妨	1(1.0)·2(0.3)	376·0.5	昧	0(0)·5(3.0)	0·7.7
慕	1(1.0)·5(4.0)	5.2·16.5	帽	1(1.0)·8(4.0)	147·55.8	枚	2(2.0)·5(5.0)	98.3·770
戊	3(1.3)·0(0)	4.0·0	忘	6(3.5)·3(0.8)	21.0·1.0	每	27(26)·7(1.3)	3861·1.7

Types		Tokens	Types		Tokens	Types		Tokens
K1•K2		K1•K2	K1•K2		K1•K2	K1•K2		K1•K2
哩	0(0)•0(0)	0•0	鷓	0(0)•0(0)	0•0	門	39(27)•73(44)	296•4400
槓	0(0)•0(0)	0•0	棕	1(0.5)•0(0)	0.8•0	匆	0(0)•0(0)	0•0
幕	15(11)•29(22)	333•1949	婿	0(0)•5(3.5)	0•46.8	也	0(0)•1(0.2)	0•0.2
膜	2(0.8)•26(18)	1.5•280	娘	4(1.8)•10(7.3)	23.0•91.0	治	1(1.0)•3(1.8)	5.0•9.2
枕	7(2.8)•16(5.5)	8.5•22.2	冥	10(6.8)•4(0.7)	25.5•1.0	夜	63(38)•61(44)	747•2307
鮪	0(0)•1(0.2)	0•0.2	名	98(75)•105(79)	5762•5092	爺	1(0.3)•2(1.2)	0.3•1.3
枉	1(0.5)•0(0)	0.5•0	命	12(9.2)•55(38)	1064•3650	耶	0(0)•0(0)	0•0
鱒	0(0)•2(0.5)	0•0.5	明	65(43)•61(47)	2536•15679	野	87(56)•40(31)	5987•4034
榭	0(0)•0(0)	0•0	盟	4(3.3)•6(3.7)	68.0•3256	弥	7(4.3)•2(0.7)	52.0•1.2
亦	0(0)•0(0)	0•0	迷	16(11)•5(3.2)	615•1501	矢	20(12)•14(6.0)	148•29.3
侯	0(0)•2(1.5)	0•41.5	銘	8(5.8)•6(2.8)	462•73.3	厄	6(4.2)•4(1.8)	13.3•8.2
又	0(0)•0(0)	0•0	鳴	9(6.3)•11(5.3)	41.2•234	役	18(14)•63(45)	6111•2822
抹	4(3.2)•2(1.2)	114•15.0	姪	0(0)•0(0)	0•0	約	7(5.3)•34(26)	1178•7409
末	32(20)•26(20)	537•2650	牝	3(1.3)•0(0)	37.5•0	藥	51(34)•43(29)	1720•1387
沫	0(0)•3(1.8)	0•4.7	滅	11(7.0)•25(19)	59.8•1021	訊	16(11)•37(27)	105•1206
迄	0(0)•1(0.5)	0•0.7	免	13(11)•8(6.5)	1034•236	躍	5(4.2)•8(7.2)	308•1729
俚	0(0)•3(0.8)	0•1.0	棉	1(0.2)•0(0)	0.5•0	靖	0(0)•0(0)	0•0
繭	2(1.2)•3(1.0)	4.7•1.7	綿	16(9.5)•12(7.2)	65.7•65.2	柳	9(4.2)•10(6.3)	44.7•107
磨	0(0)•0(0)	0•0	緬	1(0.3)•1(0.8)	1.3•1.0	蕪	0(0)•1(0.2)	0•0.2
万	57(39)•13(12)	811•3952	面	31(20)•115(87)	1612•10617	鍵	0(0)•0(0)	0•0
慢	3(2.2)•6(5.3)	178•567	麵	2(1.5)•8(2.3)	2.5•5.8	愉	3(2.3)•0(0)	10.0•0
滿	42(32)•10(8.7)	1979•2347	摸	0(0)•1(0.3)	0•0.8	愈	0(0)•0(0)	0•0
漫	12(6.5)•5(3.7)	499•34.2	模	12(10)•1(1.0)	1924•2392	油	34(23)•26(18)	392•2263
蔓	1(1.0)•1(0.2)	11.5•0.5	茂	1(0.3)•1(1.0)	0.3•4.8	癒	2(1.2)•3(2.2)	335•31.7
味	8(6.3)•65(45)	305•5681	妄	8(5.7)•2(1.8)	65.2•4.7	諭	2(1.2)•4(2.0)	10.5•493
未	33(24)•2(0.5)	2815•0.5	孟	3(0.5)•0(0)	1.0•0	輸	6(5.2)•4(4.0)	6390•776
魅	3(3.0)•0(0)	1125•0	毛	23(17)•54(28)	269•137	唯	6(3.2)•0(0)	666•0
巳	0(0)•4(1.8)	0•13.8	猛	27(19)•1(1.0)	429•1.3	佑	0(0)•1(0.5)	0•0.7
箕	0(0)•1(0.2)	0•0.3	盲	13(7.0)•3(2.0)	65.8•30.0	優	22(18)•8(7.5)	7428•1216
岬	0(0)•0(0)	0•0	網	14(9.2)•18(6.8)	179•64.7	勇	16(12)•9(5.0)	417•22.8
密	35(28)•17(14)	1233•885	耗	0(0)•6(3.8)	0•65.7	友	13(11)•34(22)	2650•334
蜜	5(2.8)•4(1.5)	16.3•3.8	蒙	1(0.5)•3(1.5)	0.5•23.5	宥	1(0.8)•0(0)	2.0•0
湊	1(1.0)•0(0)	2.8•0	儲	0(0)•3(1.7)	0•3.0	幽	12(6.5)•0(0)	85.2•0
蕪	2(1.0)•1(0.2)	1.3•0.2	木	97(61)•108(66)	1208•1365	悠	6(4.5)•0(0)	15.5•0
稔	1(0.2)•0(0)	0.2•0	默	16(11)•4(3.3)	187•248	憂	9(4.7)•4(2.2)	163•4.2
脈	4(3.2)•20(16)	36.7•504	目	47(35)•123(88)	7371•6892	揖	0(0)•0(0)	0•0
妙	15(8.0)•12(8.7)	73.5•107	柰	0(0)•0(0)	0•0	有	65(45)•39(30)	4262•2459
耗	0(0)•0(0)	0•0	勿	2(2.0)•0(0)	8.0•0	柚	1(0.8)•0(0)	6.3•0
民	39(36)•65(45)	7188•18280	餅	2(1.2)•18(8.0)	2.3•20.7	湧	4(2.3)•0(0)	8.7•0
眠	1(1.0)•15(11)	16.0•274	尤	0(0)•0(0)	0•0	涌	0(0)•0(0)	0•0
務	0(0)•63(55)	0•11749	戾	1(0.3)•5(3.0)	0.3•22.5	猶	1(1.0)•0(0)	172•0
夢	14(8.8)•10(5.0)	85.3•102	粿	1(0.2)•1(0.2)	0.2•0.7	猷	0(0)•0(0)	0•0
無	139(104)•12(6.7)	6476•399	貫	0(0)•0(0)	0•0	由	5(3.2)•5(4.7)	149•6992
牟	1(1.0)•0(0)	8.3•0	問	7(5.7)•36(30)	22340•8370	祐	1(0.5)•1(0.2)	0.5•0.3
矛	3(2.2)•1(0.8)	540•4.0	悶	3(1.0)•4(2.3)	1.2•6.7	裕	1(1.0)•3(2.5)	6.7•799
霧	10(4.8)•11(6.3)	10.3•46.7	紋	7(3.7)•20(9.2)	23.8•358	誘	12(9.3)•1(1.0)	1159•172

	Types		Tokens			Types		Tokens			Types		Tokens	
	K1·K2	K1·K2	K1·K2	K1·K2		K1·K2	K1·K2	K1·K2	K1·K2		K1·K2	K1·K2	K1·K2	K1·K2
遊	44(31)·26(13)	426·158	羅	5(2.2)·8(5.2)	29.2·94.7	竜	12(6.7)·12(6.2)	111·267						
邑	0(0)·0(0)	0·0	螺	2(1.2)·3(1.0)	3.2·1.2	龍	8(4.2)·9(4.3)	24.3·12.3						
郵	6(5.2)·0(0)	778·0	裸	11(7.5)·5(4.0)	71.0·38.0	侶	0(0)·2(2.0)	0·38.0						
雄	30(17)·8(5.3)	80.8·289	来	57(44)·54(45)	6767·12502	慮	0(0)·16(11)	0·2528						
融	9(7.2)·4(3.3)	3417·4464	菜	0(0)·1(0.8)	0·3.7	旅	23(17)·8(4.0)	2292·38.8						
夕	26(19)·15(13)	1097·508	頼	0(0)·3(3.0)	0·2421	虜	1(0.8)·1(1.0)	3.2·291						
予	29(25)·1(1.0)	17670·172	雷	15(8.3)·12(8.8)	48.8·571	了	5(3.7)·11(8.5)	902·1758						
余	46(34)·11(7.2)	2250·65.5	洛	4(3.5)·3(1.3)	15.2·2.0	亮	0(0)·1(0.2)	0·0.2						
与	3(2.8)·18(15)	5112·3416	絡	0(0)·6(4.2)	0·2184	僚	4(3.0)·5(4.3)	18.2·4438						
誉	0(0)·2(2.0)	0·640	落	46(32)·40(29)	1693·3030	両	76(57)·6(5.5)	7268·697						
輿	2(0.7)·3(1.7)	0.7·20.2	酪	2(1.2)·2(0.3)	76.8·0.3	凌	2(1.7)·0(0)	6.3·0						
預	4(3.5)·0(0)	1347·0	乱	42(31)·30(19)	728·2055	寮	6(4.8)·5(3.2)	64.0·14.8						
備	3(1.5)·3(0.8)	13.0·0.8	卵	16(11)·12(7.7)	154·160	料	6(5.0)·38(29)	2558·7295						
幼	21(17)·3(1.2)	430·2.0	嵐	1(0.2)·10(3.7)	0.2·9.2	梁	1(0.2)·6(3.3)	0.2·22.7						
妖	12(6.3)·1(0.5)	82.3·1.5	欄	3(2.8)·3(2.3)	23.3·224	涼	5(3.8)·11(6.7)	17.0·63.5						
容	16(14)·24(19)	3341·6132	濫	5(2.0)·1(1.0)	3.0·19.0	獵	10(6.7)·8(4.7)	45.0·74.5						
庸	0(0)·3(2.2)	0·7.3	藍	4(2.5)·4(1.8)	5.5·14.2	療	5(3.3)·7(5.3)	445·5499						
揚	10(5.0)·15(11)	32.5·341	蘭	4(2.2)·7(2.0)	5.8·3.0	瞭	0(0)·1(1.0)	0·15.0						
揺	2(0.5)·1(1.0)	0.8·257	覧	0(0)·21(16)	0·392	稜	2(1.3)·1(0.5)	9.3·0.5						
擁	3(2.8)·1(1.0)	779·10.0	利	35(27)·47(33)	9090·5641	糧	3(1.8)·5(3.0)	9.0·1012						
曜	2(1.5)·12(9.8)	43.3·1259	吏	3(1.2)·10(4.2)	1.8·19.8	良	37(23)·12(9.5)	292·2536						
楊	4(1.8)·2(0.5)	3.8·1.2	履	4(4.0)·3(1.8)	229·13.0	諒	3(1.0)·0(0)	1.5·0						
様	5(4.0)·41(31)	1770·2659	李	1(1.0)·2(1.0)	4.0·2.8	遼	1(0.2)·0(0)	0.3·0						
洋	35(24)·17(13)	489·575	梨	3(1.5)·0(0)	2.7·0	量	11(8.3)·70(58)	299·2932						
溶	13(9.2)·3(0.8)	213·1.8	理	24(21)·55(46)	12634·15812	陵	4(2.0)·7(3.5)	27.2·70.8						
熔	2(0.8)·0(0)	1.3·0	璃	0(0)·2(1.2)	0·4.0	領	21(16)·30(18)	1079·857						
用	39(28)·106(86)	3088·22415	痢	0(0)·3(2.5)	0·129	力	27(20)·117(95)	913·25027						
窯	5(5.0)·6(1.5)	31.0·1.8	裏	32(24)·15(8.8)	732·114	緑	19(13)·12(9.0)	260·118						
羊	11(6.2)·11(5.0)	40.7·14.3	裡	0(0)·3(0.7)	0·0.8	倫	1(1.0)·4(2.8)	640·148						
耀	0(0)·1(0.2)	0·0.2	里	14(8.3)·21(15)	71.5·228	厘	0(0)·1(0.2)	0·0.3						
葉	29(17)·56(30)	48.7·5127	離	28(21)·16(9.7)	2211·1887	林	16(13)·36(23)	288·930						
蓉	0(0)·1(1.0)	0·13.3	陸	28(20)·9(8.2)	894·1289	淋	2(0.7)·0(0)	3.2·0						
要	41(30)·20(16)	9596·10332	律	11(6.7)·15(11)	25.0·2184	燐	2(1.2)·1(0.2)	5.7·0.2						
謡	2(1.3)·7(6.3)	11.5·280	率	2(2.0)·26(21)	164·3793	琳	0(0)·0(0)	0·0						
踊	2(0.8)·3(2.5)	1.5·231	立	63(42)·84(59)	4983·16539	臨	14(13)·6(3.7)	1232·72.0						
遥	1(0.2)·0(0)	0.7·0	葎	0(0)·0(0)	0·0	輪	15(9.0)·49(32)	83.7·3548						
陽	12(7.7)·14(10)	213·506	掠	1(0.8)·0(0)	1.3·0	隣	12(11)·6(4.3)	627·305						
養	20(18)·18(16)	909·1148	略	22(13)·28(18)	278·2304	鱗	4(1.7)·5(3.0)	2.7·9.3						
慾	0(0)·2(0.3)	0·0.3	劉	0(0)·0(0)	0·0	麟	0(0)·0(0)	0·0						
抑	5(5.0)·1(0.2)	1252·0.2	流	48(36)·87(63)	2495·3942	瑠	1(1.0)·0(0)	3.8·0						
欲	9(5.8)·17(12)	198·1221	溜	3(1.8)·5(1.0)	4.3·1.2	墨	5(5.0)·16(14)	114·2461						
沃	1(0.7)·1(1.0)	1.3·4.8	琉	4(2.3)·0(0)	62.3·0	淚	7(3.3)·8(3.8)	29.3·15.3						
浴	8(6.2)·8(4.8)	181·144	留	18(11)·24(18)	1092·1199	累	13(7.0)·2(1.0)	348·1.8						
翌	15(13)·0(0)	1407·0	硫	4(3.5)·1(0.8)	52.0·4.2	類	13(10)·27(25)	193·2950						
翼	6(3.8)·9(7.2)	45.0·812	粒	8(3.5)·15(9.7)	126·71.7	令	8(4.2)·24(17)	67.3·1624						
淀	0(0)·0(0)	0·0	隆	3(2.2)·1(1.0)	72.7·15.5	伶	0(0)·0(0)	0·0						

Types		Tokens	Types		Tokens	Types		Tokens
K1•K2		K1•K2	K1•K2		K1•K2	K1•K2		K1•K2
例	14(10)•37(27)	970•4035	聯	4(1.8)•0(0)	117•0	六	50(37)•14(12)	10756•4053
冷	37(27)•10(5.3)	1946•42.7	蓮	5(3.0)•6(4.2)	10.7•13.0	麓	1(0.2)•3(1.7)	0.2•7.8
励	2(1.5)•6(5.7)	16.3•379	連	71(58)•22(19)	17181•7505	祿	2(0.5)•15(6.2)	0.5•24.3
嶺	0(0)•6(3.8)	0•9.3	鍊	4(3.0)•4(3.3)	14.5•62.3	肋	2(1.5)•1(0.2)	3.2•0.2
怜	0(0)•0(0)	0•0	呂	0(0)•6(3.3)	0•43.7	録	4(2.8)•22(17)	423•5264
玲	0(0)•0(0)	0•0	魯	0(0)•0(0)	0•0	論	37(30)•69(51)	4563•8355
礼	18(13)•31(25)	187•623	櫓	1(0.3)•1(0.5)	0.3•1.5	倭	4(1.3)•0(0)	2.5•0
苓	0(0)•0(0)	0•0	炉	5(3.3)•11(7.7)	42.0•164	和	63(46)•38(29)	2679•4565
鈴	4(2.2)•6(2.2)	4.8•12.7	賂	0(0)•1(1.0)	0•23.2	話	12(7.5)•59(40)	1230•8886
隸	3(1.8)•1(1.0)	9.3•75.7	路	13(9.5)•71(56)	2166•2949	歪	1(1.0)•0(0)	9.0•0
零	11(7.5)•0(0)	466•0	露	21(13)•21(13)	260•649	賄	2(1.3)•2(2.0)	23.5•545
靈	39(23)•24(18)	121•381	勞	19(18)•17(14)	3273•1268	脇	13(4.8)•4(2.7)	10.7•140
麗	2(1.2)•9(6.5)	3.3•45.2	婁	0(0)•0(0)	0•0	惑	3(1.8)•9(9.0)	76.7•2800
齡	0(0)•13(9.8)	0•1804	廊	1(1.0)•6(3.3)	208•175	梓	3(3.0)•14(10)	183•193
曆	6(3.2)•19(9.0)	12.5•163	弄	0(0)•2(2.0)	0•43.5	鷺	1(0.2)•2(0.7)	0.2•1.0
歷	8(7.3)•29(20)	3587•487	朗	6(4.2)•3(2.2)	253•10.0	互	0(0)•0(0)	0•0
列	11(8.8)•28(23)	757•1234	樓	5(3.2)•9(4.0)	11.8•10.5	亘	0(0)•0(0)	0•0
劣	8(6.2)•6(3.7)	136•46.0	榔	0(0)•0(0)	0•0	鱒	1(0.2)•0(0)	0.2•0
烈	8(4.5)•13(9.2)	22.7•53.5	浪	7(5.7)•12(8.8)	258•121	詫	0(0)•0(0)	0•0
裂	4(1.8)•8(5.3)	4.7•1207	漏	8(5.2)•6(1.8)	49.2•3.0	藁	5(0.8)•2(0.3)	1.2•0.5
廉	5(3.7)•2(2.0)	55.3•6.8	牢	4(2.8)•3(1.5)	11.0•5.8	蕨	1(0.2)•1(0.5)	0.7•0.5
恋	15(11)•9(6.3)	499•62.5	狼	3(1.8)•2(0.3)	8.5•0.7	椀	0(0)•3(0.5)	0•0.5
憐	0(0)•3(1.3)	0•6.2	箆	7(2.8)•22(9.5)	5.8•30.8	湾	6(4.2)•2(2.0)	87.8•305
漣	0(0)•0(0)	0•0	老	74(49)•18(13)	1656•251	碗	0(0)•2(1.2)	0•15.2
煉	2(1.7)•1(0.3)	7.2•0.3	聾	2(0.8)•1(0.2)	2.3•0.2	腕	11(5.5)•14(12)	82.2•694
簾	0(0)•4(2.2)	0•3.7	蠟	3(1.5)•4(1.7)	2.8•3.2			
練	12(5.8)•17(13)	1947•1482	郎	3(1.8)•8(8.0)	4.0•470			